

9-15-1980

On the Green Vol. 10 No. 48 September 15, 1980

On the Green

Follow this and additional works at: https://ida.gallaudet.edu/onthegreen_1971-1980

Recommended Citation

On the Green, "On the Green Vol. 10 No. 48 September 15, 1980" (1980). *1971-1980*. 384.
https://ida.gallaudet.edu/onthegreen_1971-1980/384

This News Article is brought to you for free and open access by the On the Green at IDA@Gallaudet. It has been accepted for inclusion in 1971-1980 by an authorized administrator of IDA@Gallaudet. For more information, please contact james.mccarthy@gallaudet.edu.

Gallaudet co-sponsors conference on rubella and deafness at NTID

Over the next years, Gallaudet, along with other service organizations and agencies, will be faced with providing postsecondary education, employment and rehabilitation to an influx of young adults who were born deaf as a result of the major rubella epidemic which swept the country between 1963-65.

An estimated 8,000 infants were born deaf and another 3,600 born deaf-blind during these years. The number of deaf infants more than doubled.

To deal with the needs of these young adults, Gallaudet is co-sponsoring a national invitational conference on deafness and rubella this week, Sept. 17-19, at the Rochester Institute of Technology in Rochester, NY.

The conference, "Deafness and Rubella: Infants in the '60's, Adults in the '80's," is being hosted by NTID and co-sponsored by NTID, Gallaudet College, the Conference of Executives of American Schools for the Deaf and the U.S. Rehabilitation Services Administration.

Representatives from Academic Affairs, the Planning Office and Research will be attending the conference, including Bernard Greenberg, Jerald Jordan, David McGuinness and John Schuchman from Academic Affairs, David Armstrong from the Planning Office, and Ray Trybus, Doin Hicks, Phil Kerstetter and Michael Karchmer from Research.

A January planning meeting held at NTID established three conference objectives:

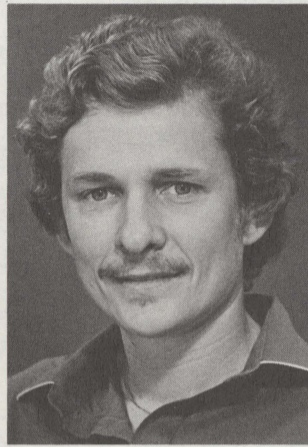
- To help organizations and agencies responsible for providing services to rubella victims become aware of their needs and the number of people they will be dealing with.
- To give attention to the special needs of multiply-handicapped young deaf rebella adults, including the deaf-blind.
- To initiate national, regional and state plans of action to assure that these young adults receive the services to which they are entitled.

Conference participants will be joining discussion groups on provision of postsecondary educational services, vocational planning and employment, services to adults with severe developmental problems and the special needs of young deaf-blind adults.

Several presentations will also be made at the conference. Ray Trybus, dean of the Research Institute, along with Ross Stuckless, director of the Office for Integrative Research at NTID, will be presenting statistics on the incidence of rubella among the children presently in school, observations about these children from their schools and projections of the



Ausma Smits



Larry Berke



Stanley Benowitz



Astrid Goodstein

Deafness Concerns Council gets to work

Meetings of the new Deafness Related Concerns Council (DRCC) will be getting underway this semester, with the intention of tackling the issues of interpreting services, on-campus employment and manual communication programs.

The new group was established last spring, after Edward C. Merrill, Jr. accepted the advice in a Nov. 6, 1979 memorandum, "Concerns of Deaf In-

dividuals," to establish the advisory group.

Ausma Smits was chosen by the members to chair the group. She will serve a two-year term on the DRCC, along with Larry Berke and Stanley Benowitz. Serving one-year terms will be Astrid Goodstein, Nathie Couthen and Don Pettingill. Hortense Auerbach will be the recorder for the group, and Mervin Garretson, special assistant to the presi-

dent, will serve as an ex-officio member.

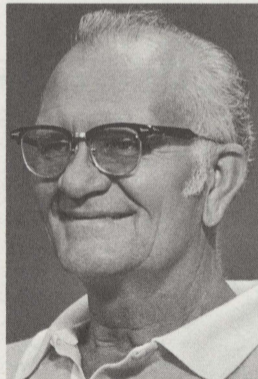
Duties of the group include providing input to Garretson or other representatives or groups concerned about needs of hearing impaired people, acting as consultants for College and Pre-College programs that will affect the deaf, sharing results of their efforts on a campus-wide basis and calling special meetings of interested faculty and staff to get broader input.

Ideas for the quantity and coordination of interpreting services should crystallize sometime during the early part of this semester. Task forces will be formed to tackle on-campus employment issues, including job descriptions, recruitment and hiring; and manual communication instructional programs.

Members of the campus community are encouraged to volunteer to work on tasks they are interested in. If you have any ideas on these issues or want to become more involved, contact Ausma Smits in Room 214 or HMB, or any other Council member.



Nathie Couthen



Don Pettingill



Hortense Auerbach

Gallaudet works to comply with barrier regulations

June 3, 1980 was the deadline set by Section 504 of the 1973 Rehabilitation Act for colleges and universities to remove all architectural barriers that prevent a handicapped individual's participation in programs.

Colleges and universities had three years prior to this date to bring their institutions into compliance with the regulations. No extensions are being given, and the Department of Education will be making on-site visits to determine if barriers have been removed. If a college or university is inaccessible it will be cited, and the institution must correct the violation within a certain time period.

In accordance with Section 504, all programs and services receiving federal funding must be accessible to handi-

capped persons. The regulations do not require that each building be accessible; however, if programs and services offered in those buildings are not accessible to handicapped individuals, then steps must be taken either to make the building accessible through structural changes or relocating the program or service to an accessible site.

Gallaudet is making a concerted effort toward attaining a barrier free environment. In its 1982 budget proposal to the Department of Education, \$500,000 was requested, and approved by the Department of Education, for barrier removal projects.

The Barrier Removal Planning/Design Team has identified 12 proposed barrier removal projects that need immediate at-

tention. The structural changes range from installing hand rails and ramps for the mobility impaired person to improving the lighting systems for the visually impaired individual. Further, efforts are being made to make the Post Office, which is temporarily located in the basement of the Washburn Fine Arts building, accessible for the mobility impaired person.

With the completion of the new Kendall School, the renovation of the Student Union Center and other projects that will be occurring on Kendall Green, Gallaudet is making a good faith effort to remove those architectural barriers that would impede the participation of handicapped individuals in the programs and services offered by the College.

Serendipity

Library Bits & Pieces

Library resources in education

by Carolyn Jones

Researching the best possible information can make a difference in the value of studies. Researching in the most efficient way can make a difference in how much time is left to absorb, learn and understand the information. Sometimes knowing what library tools to use is "half-way home" in developing a project or term paper. There's no point in wasting time by looking for certain types of materials that cannot be found through certain aids. Judicious use of library tools can ease a search along to a quick and happy completion. Here's a review of several indexes, etc. in the fields of education.

The COM and/or Card catalogs will, of course, lead to cataloged materials in the Gallaudet College Library. But *Resources in Education* is another gold mine of information which is not cataloged. *RIE* is the index to general and specialized research, writing, etc., sponsored in part by the Department of Education. The documents are all available on microfiche and some in paper form. Since the Library has the complete file on *RIE* microfiche, once you find a likely-looking item and its number, just head for the Library Media Room. The microfiche and a portable reader can be checked out for home use.

Current Index to Journals in Education is the magazine article counterpart to *RIE* and the Library's catalogs (remember them—Com and Card?) It indexes approximately 780 journals. Our Library may not have every one of the journals, but we should have enough to keep you busy!

Exceptional Child Education Resources combines both book and journal indexing in its narrower scope. There is some overlap between *ECER* and *CJIE* and *RIE* but, if a real hunt is on, all three should be checked.

Finding audio-visual aids might sometimes be a bit of a chore. The *Educators Guide* series is a group of helpful catalogs, each focusing on free aids in one field (e.g. science, social studies) or one format (e.g. films, filmstrips, teaching aids). Each catalog gives complete information (bibliographic data, format description, acquisition information) about a multitude of items. The grade slant leans slightly toward the lower grades, but many things are interchangeable. These catalogs are kept on the shelves behind the Information Desk.

Also on these shelves is a box containing two media indexes. *Educational Media Catalogs on Microfiche* is a collection of distributors' catalogs, while the *NICEM Index* (National Information for Education Media) series is grouped by format. Both offer a variety of formats and group levels. The distributors' catalogs list materials available for rent, loan or purchase.

There is much educational information available in the Gallaudet College Library. There is also much that can be acquired from other places. You may write to the different sources requesting free items. Or, the Library may get things for you on interlibrary loan. Whatever route is necessary, just don't wait until the last minute to begin your search. Finding a wonderful source of information doesn't help much if it's too late to use it.

College football season suspended

Gallaudet will be without a football team this year, but Homecoming will take place as usual and it is hoped that football will again be back on the Gallaudet campus next year.

The Gallaudet College football season for the 1980-81 academic year was recently suspended because the turnout of prospective players was too small. Attendance of players at practice varied from 18 to 35 players, and these small numbers were considered to represent too much risk of injury to students. The College Athletic Council, chaired by Rudolph Hines, officially confirmed the decision, which was recommended by the coaches and Ron Dreher, chairman of the Physical Education Department.

All other College sports will continue this year, and it is hoped that football will be re-established next year. Dreher has established a committee of students, faculty and alumni who will study football at Gallaudet and make recommendations for its future implementation. In the meantime, current prospective players will continue with a weight-training program.

The Gallaudet soccer team will represent the athletic highlight of the Homecoming Weekend on Oct. 25. Plans are being made now for Homecoming weekend. We'll tell you more about scheduled activities in a future issue of *On the Green*.



OCM Chaplains **Fielding Rogers** and **Gerard Trancone** also participated in the student orientation.

New WATS line

As part of its expansion of services under the federally-funded Access Center project, the National Center for a Barrier Free Environment has installed a toll-free, incoming WATS line. The new line will allow individuals and organizations to obtain information about, or assistance with, issues or problems relating to environmental access and barrier free design.

The Access Information Line number is 800-424-2809.

The National Center provides services exclusively in the area of physical accessibility and barrier free design.

Sign Language Instruction for Gallaudet Employees (S.L.I.G.E.)

Sign language classes for Gallaudet employees are scheduled to begin the week of Sept. 22 and will continue through Dec. 11, 1980. Classes will be offered on beginning and intermediate levels according to the following schedule:

Beginning I (section 1)	Tuesdays/Thursdays - 9-10 a.m. - L. Jacobowitz
Beginning I (section 2)	Mondays/Wednesdays - 9-10 a.m. - TBA
Beginning II	Mondays/Wednesdays - 2-3 p.m. - A. Sutcliffe
Intermediate I	Tuesdays/Thursdays - 9-10 a.m. - A. Sutcliffe
Intermediate II	Mondays/Wednesdays - 1-2 p.m. - L. Argule

In order to ensure a space in class, students must complete a registration form, available through the Department of Sign Communication, located on the second floor of the Mary Thornberry Hearing and Speech Building, Room 215A. Forms must be returned to that department no later than noon Friday, Sept. 19. Students will be notified of room numbers at a later date. Staff members who are uncertain of the appropriate level class should call the Department of Sign Communication for a placement interview (x5630). There is no fee for S.L.I.G.E. classes.



Fran Kenyon, Leroy Schauer and Nancy Grandle of the Office of Campus Ministries help set up for the orientation held for students on campus recently.

Sponsored R&D

Grant/contract deadlines

Provided below are application deadlines of selected federal programs that offer potential grant or contract opportunities for Kendall Green faculty, staff and graduate students. The deadline is followed by an abbreviation of the federal agency and the program title. More details on programs of interest can be obtained from Glenn Pfau, (Office of Sponsored Research, x5030 (Voice or TDD)).

Deadline	Program
10/12/80	OSE—Handicapped Research and Demonstration Program: Student Research Grants
10/13/80	NEH—1981 Summer Fellowship Stipends for Faculty
10/15/80	AHNC—Model Sites and Special Sites
10/15/80	OSE—Handicapped Personnel Preparation Grants
10/21/80	NIE—Grants for Research on Institutions of Post-secondary Education
10/22/80	DE—Special Services for Disadvantaged Students Grants
10/24/80	NSF—Unsolicited Proposal Related to Mathematical Science
10/31/80	OSE—Handicapped Research and Demonstration Field Initiated Studies Grants
11/01/80	NICHD—Developmental Aspects of Nutrition
11/01/80	NIA—Social and Behavioral Aging Research

Weekly program highlight

The National Endowment for the Humanities has announced Oct. 13, 1980 as the application deadline for their 1981 summer Fellowship Program. This program, providing a stipend of \$25,000, is to support college, university, junior and community college teachers and others working in the humanities, to pursue two consecutive months of full-time study or research. The work proposed may be within the applicants' special field of study or may be in some other field that will enable them to understand their own fields better and enlarge their competence. The proposed project may be one that can be completed during the stipend period or it may be part of a long-range project.

Applicants must have completed their formal academic training (either master's degree or doctorate) by the date of the application. A maximum of three applicants are allowed from each institution, and applicants must first be nominated by their respective institutions.

The scope of NEH supports includes, but is not limited to, study of history, philosophy, languages, linguistics, literature, history and criticism of the arts, ethics, comparative religion and those aspects of the social sciences that employ historical or philosophical approaches. Studies which are predominantly empirical, clinical or methodological are not eligible for support.

For further information contact one of the academic deans, the dean of the Research Institute or the Office of Sponsored Research.

President's Office Notes

FY '82 budget

Gallaudet College has recently received its FY 1982 budget allowance from the newly-established federal Department of Education (ED). The review and approval of this budget request by ED represents the first of four reviews by federal governmental bodies. The next review will be by the Office of Management and Budget during the fall, followed by House and Senate committee scrutiny. The information required, the form in which it must be submitted and the review procedures differ at each of these four steps. The turnaround time for submitting information to each body is traditionally very short. For example, it is not uncommon to be requested to provide data within 24 hours.

Negotiations with ED have been particularly difficult. Because they are a new agency, the people reviewing our request do not yet know much about the Gallaudet mission of service to deaf people. Furthermore, the Department began its operation only a month before our FY 1982 request submission date. As a result, the time set aside for ED review was especially short. Thus, Gallaudet has been working with new staff who were using new submission guidelines and reviewing a budget from an unfamiliar College serving people with unique needs.

As the table below shows, Gallaudet's budget request represented a modest increase in overall funding for a period of high inflation. ED's initial allowance provided sufficient funds for built-ins, i.e. funds enabling Gallaudet to provide the same level and quality of service in FY 1982 as provided in FY 1981. That allowance also provided sufficient funds to permit enrollment increases of 70 students at MSSD and 30 students at KDES.

However, it contained almost no program increase funding for the College itself and drastically cut back on the Gallaudet construction request.

Failure to obtain additional funds for College operating programs would have resulted in severe reductions in the quality of instructional, academic support and student support services provided to

an estimated 101 additional College students as well as 1,049 additional participants in Public Service programs. It would have eliminated growth in Research, Educational Technology and institutional support services required because of growth in instructional and other services to deaf people. In addition, it meant a postponement of several important building renovation projects and the planning and design of new facilities as outlined in the Gallaudet Campus Master Plan.

Under these circumstances, Gallaudet had no choice but to appeal this ED allowance level. Following several discussions with ED administrators, an additional \$1,518,000 for College operating programs was added back to the budget. However, no additional construction funds were restored. Only construction and equipment funding for an additional dormitory and for removal of additional physical barriers was permitted.

Gallaudet College will be able to meet its basic mission and most of its FY 1982 objectives at the ED allowance level of funding. Within the next few weeks a decision as to how to allocate this level of funds across Gallaudet divisions and budget units will be made. The College has already submitted to OMB a revised FY 1982 budget request which reflects this allowance level.

Maintaining positive relations with all agencies who review our budget is always important. However, the College is working especially hard to maintain cordial relations with the new ED staff. Several staff members are expected to visit our campus this fall. If you have any questions about the status of the budget please contact Kurt Schneidmiller in the Planning Office at x5132.



Director of Development **Betty Fuchs** and Coordinator of Corporate and Foundation Relations **Victoria Dubitsky** helped the College get the Hearst Foundation grant.

Hearst Foundation grant received

by **Victoria Dubitsky**
Office of Development

"With regards to academic excellence, it is not enough to know; we must try to have it and use it."—Aristotle

Gallaudet College concurs. And by designating a major grant from the Hearst Foundation for the Faculty Development Program, Gallaudet has demonstrated that its academic philosophy parallels that of the Greek philosopher's.

The Hearst Foundation's \$25,000 grant to the College was given in response to a concept paper on unrestricted grants submitted by the Development Office. The funds will be divided between the School of Communication and the School of Education and Human Services for Faculty Development.

Gallaudet has long realized that educational excellence begins with teaching excellence. As such, its Faculty Development Program has offered the

following activities to its educators:

- Symposia on progress and innovation in the field of special education.
- Workshops on total communication.
- Conferences on faculty/student relations.
- Orientation programs on the history, services and mission of Gallaudet.
- Sign language courses.

Although each of these programs and services has its specific focus, the main thrust of these efforts is to challenge and encourage Gallaudet faculty members to contribute effectively to the leadership role of the College in special education while at the same time enriching their professional lives.

The Hearst Foundation was established in 1948 by the late William Randolph Hearst, the newspaper publishing magnate. It now ranks among the 50 largest foundations in the United States. The Foundation is strongly committed to education, culture, youth and social services.

FY 1982 BUDGET REQUEST: RESULTS OF DEPARTMENT OF EDUCATION (ED) REVIEW (\$'s in 1000's)

	FY 1981 Base Budget		FY 1982 Request to ED (Increase)		ED Initial Allowance (Increase as Appealed)		ED Final Allowance (Increase)		Final Allowance		
	Pos.	\$'s	Pos.	\$'s	Pos.	\$'s	Pos.	\$'s	Pos.	\$'s	
OPERATING BUDGET											
College											
Built-ins			+8	+3,877	+8	+3,877	+8	+3,877			
Program Increases			+73	+2,666	+2	+86	+63	+1,604			
Total	996	26,829	+81	+6,543	+10	+3,963	+71	+5,481	1,067	32,310	
MSSD											
Built-ins				+496		496		496			
Program Increases			+3	+726	+3	+641	+3	+641			
Total	237	10,565	+3	+1,222	+3	+1,137	+3	+1,137	240	11,702	
KDES											
Built-Ins				+351		+351		+351			
Program Increases			+2	+386	+2	+259	+2	+259			
Total	136	5,780	+2	+737	+2	+610	+2	+610	138	6,390	
Gallaudet-wide											
Built-ins*				+8	+4,724	+8	+4,724	+8	+4,724		
Program Increases			+78	+3,778	+7	+986	+68	+2,504			
Total	1,369	43,174	+86	+8,502	+15	+5,710	+76	+7,228	1,445	50,402	
CONSTRUCTION											
Request**		6,594		+10,364		+4,536		+4,536		11,130	
Total College Request		49,768		+18,866		+10,246		+11,764		61,532	
Total % Increase in Federal Funding				+37.9%		+20.6%		+23.6%			

* Items included as "built-ins" include total faculty and staff compensation increases of 9.5% in FY 1982 (\$3,521,000), annualization of positions authorized part year in FY 1981 (\$38,000), annualization of operating costs for buildings occupied part year in FY 1981 (\$429,000) and increased utility costs (736,000.00).

** Projects approved for funding include:

- New dormitory (construction)

Projects not approved for funding include:

- Fowler Hall Renovation
- Dawes House/Kendall Hall Renovation (Planning and Design)
- Advanced and Special Programs Building (Planning and Design)
- Utility Tunnel (Construction)



Published each Monday for staff and faculty of Gallaudet College by the Office of Alumni and Public Relations.

APR Director:
Jack R. Gannon

Director of Publications:
Laura-Jean Gilbert

Editor:
Vickie Walter

Contributors for this issue:
Janet Bailey
Dotti Hazen
LaVarne Hines
Glenn Pfau
Kurt Schneidmiller

Photographers:
Pete Moran
Charles Shoup

Gallaudet College is an equal opportunity employer-educational institution. Programs and services offered by Gallaudet College received substantial financial support from the Department of Education.



Associate Professor of Chemistry **Charles Gilmore** works with a student.

Funds available for faculty and graduate student research projects

Dr. Clarence Williams, coordinator of faculty and graduate student research in the Division of Research has announced the availability of funding for small research projects through his office. These internal awards from the Research Support Fund, up to a maximum of \$2,000 are intended for either individuals or departments/units to plan, conduct or complete research-related activities. For projects that are anticipated to begin in January, 1981, the application deadline is Nov. 10.

The nature of the problem, the methods that will be used and an indication of the expected results should be

described in a brief application. Also, a Proposal Cover Sheet must be completed (to be obtained from Williams' office) which must show the campus administering unit, and must provide the signed approval of the department, school or supervisor. Ordinarily, the projects should be designed to be completed within one year. Applications will be considered by a three-member Review Committee. Personnel within the Gallaudet Research Institute are not eligible to participate in this special program.

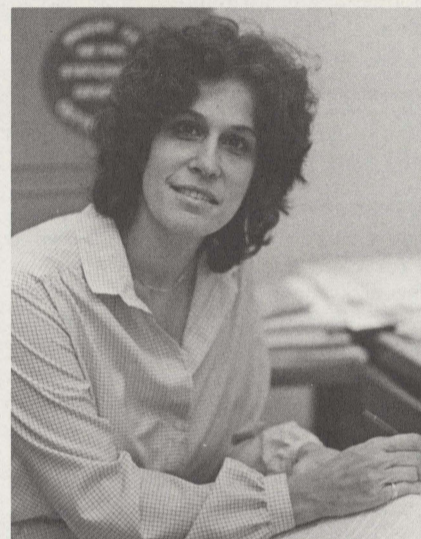
It is anticipated that a wide variety of research-related programs, ranging from small descriptive and/or experimental studies and surveys to the planning of larger research projects which may result in a proposal for external funding will be supported. More complete details, application forms and related information may be obtained from Clarence Williams, x5030 (Voice or TDD).

Among Ourselves

William McFarland of the Department of Audiology presented a two-day seminar Aug. 14 and 15 on "Approaches to the Identification of Hearing Loss in the Neonate and Young Infant." The seminar was presented to audiologists and physicians in the state of Montana.

Lee Hunter, Jayne Lytle, Bill Moses and Dan Nascimento paid a visit to NTID/RIT visual communication programs July 29-30. The four are members of the School of Communication Visual Arts Task Force set up by Dean David Tweedie to investigate the feasibility of an undergraduate major in some aspect of television, film and the graphic arts.

Eugene Bergman, assistant professor of English, and "Tales from a Cubroom," the play he co-authored with Bernard Bragg, were featured in an article in the *Baltimore Sun Magazine* on July 27.



Carole Frankel is a Romance Languages instructor.



Interpreted performance

Susan French and Alex Pierson are currently appearing in the musical comedy "Guys and Dolls" at the Hayloft Dinner Theatre in Manassas, Va. French, a former teacher of the deaf, will even do some signing herself. An interpreted performance has been scheduled for Sept. 25, beginning at 7 p.m. The food is excellent and the management has promised good seats with a good view of the interpreter for everyone. Cost is \$14.25. A bus will also be leaving from Gallaudet. To make reservations, call Demonstration Programs at x5597.

Jobs Available

For additional information contact the Personnel Office.

STAFF

SECRETARIAL POSITIONS: Contact Personnel for listing.
PROGRAMMER/ANALYST: Business Data Systems
MEDICAL DIRECTOR: Student Health Service
WORD PROCESSING SPECIALIST: MSSD/ Administrative Support Services
PRODUCTION TYPIST: IMRADC
DIRECTOR: Counseling and Placement Center
TV STUDIO ENGINEER: Gallaudet Television
NON-PRINT READING MATERIALS COORDINATOR: Student Special Services
DISTRIBUTION/RECEIVING CLERK: Outreach
PRODUCTION SPECIALIST: Gallaudet College TV
LIBRARY TECHNICAL ASSISTANT-MEDIA: Library
PROGRAMMER: Business Data Systems
SYSTEMS LIBRARIAN: Library
EPOC INTAKE COORDINATOR: EPOC ASSISTANT COORDINATOR, VISITORS CENTER: Alumni/Public Relations
PLATO TECHNICIAN: KDES/Educational Resources
RESEARCH ASSISTANT: Demographic Studies
GROUNDKEEPER: Grounds
ACCOUNTING CLERK I: Accounting
VIDEO/AUDIO DIST. SYSTEM OPERATOR: Technical Support Center

FACULTY

ASSISTANT LIBRARIAN: KDES
SIGN LANGUAGE INSTRUCTORS: KDES
FACULTY POSITIONS (2): Dept. of Sign Communication

Classified Ads

FOR RENT: 3 bedroom house, living room with fireplace, dining room, full basement and fenced yard. Great location only 3 1/2 miles from Gallaudet. \$550/mo plus utils. Available Dec. 20, 1980 - August, 1981. Call Belinda or Jim at 927-7693.

ANNOUNCEMENT

College Council Meeting

Oct. 1, 3:15 p.m.
 Red Room, Cafeteria
 Topic: Sign Language Evaluation
 College Council Coordinators:
 Mark Godlfarb & Mynga Futrell
 Everyone Welcome

Rubella

continued from page 1

types of services they are likely to require and when the services will be needed.

McCay Vernon, professor of psychology at Western Maryland College and Gallaudet's Powrie V. Doctor Chair last year, will discuss rubella and multiple handicaps. Al Pimentel, executive director of the NAD, will discuss, along with two others, the needs of young deaf and deaf-blind rubella adults from the perspective of a deaf adult, deaf-blind adult and parent of a deaf rubella child. Other presentations will include an orientation to medical aspects of rubella and implications of the epidemic for services to young deaf adults.

Invited to the conference are regional and state coordinators of rehabilitation services to the deaf, other state and federal agency officials, directors of postsecondary educational programs for the deaf, directors of agencies offering services to deaf adults with severe developmental needs, representatives of agencies serving the deaf-blind and parents, deaf and deaf-blind adults.

In addition to the sponsors, other organizations involved in the conference include the American Deafness and Rehabilitation Association, Council of State Administrators of Vocational Rehabilitation and the National Association of the Deaf.

Look for a follow-up story on the conference in a future issue of *OTG*.

Monument tour Sat.

On Saturday, Sept. 20 at 2 p.m., the National Park Service will offer a signed tour of the Washington Monument. The tour will be conducted by Bunny Larson, a Gallaudet Graduate, in ASL.

If you're interested, please call either 782-7021 (TDD) or 782-7080 (voice) for reservations or information.

Calendar

September

15 - LECTURE, "Arts In America," Sub, x5182, HMB Room 274, 7:30 p.m.

16 - FIELD HOCKEY (HOME): Georgetown University, 4:30 p.m.

17 - VOTER REGISTRATION DRIVE, SUB x5182, Snack Bar /Cafeteria, 12 noon - 2 p.m.

- SOCCER (HOME): Washington Bible College, 4 p.m.

18 - LECTURE, "Film Techniques," Eric Malzkahn, Speaker, HMB 270, 7-9 p.m.

- WOMEN'S VOLLEYBALL (HOME): Charles C.C., 4 p.m.

19 - FOREIGN FILM, "Seven Beauties," SUB x5182, 7 p.m. DISCUSSION OF FILM, led by Eric Malzkahn, following film showing, Benson Hall.

- SOCCER (AWAY): Harford C.C., 3:30 p.m.

- COLLOQUIUM: Lecture by Dr. Donald Moores, author of "Educating the Deaf: Psychology, Principles & Practices" HMB 309, 1-2:30 p.m.

20 - CROSS COUNTRY (AWAY) Washington College Invitational.

22 - MIME DEMONSTRATION with Daniel Anderson, SUB x5182,

Auxiliary Gym, 7 p.m.

23 - SOCCER (AWAY): Mary Washington College, 4 p.m.

- WOMEN'S VOLLEYBALL (AWAY): Catholic U./American U (at C.U.), 6 p.m.

- PUPPETRY DEMONSTRATION with Judy Brown, SUB x5182, HMB 274, 7-9 p.m.

24 - CALLIGRAPHY CLASS, SUB x5182, HMB 270, 7-9 p.m.

- FIELD HOCKEY (HOME): Essex C.C., 4:30 p.m.

25 - ORIGAMI CLASS, SUB x5182, HMB 270, 7-9 p.m.

26 - CLOWN PERFORMANCE SUB x5182, MSSD Auditorium, 8 p.m.

- SOCCER (AWAY): Chesapeake College, 3:30 p.m.

- FIELD HOCKEY (Away): Montgomery College, 4 p.m.

- WOMEN'S VOLLEYBALL (AWAY): George Mason Tournament.

27 - CROSS COUNTRY (AWAY): Messiah/Eastern College, 2:30 p.m.

- ROLLER DISCO, Social-Cultural Affairs Committee, Auxiliary Gym, 9 p.m.-1 a.m.

28 - TOUR of National Gallery of Art, SUB x5182, 1 p.m.