

1-21-1980

## On the Green Vol. 10 No. 14 January 21, 1980

On the Green

Follow this and additional works at: [https://ida.gallaudet.edu/onthegreen\\_1971-1980](https://ida.gallaudet.edu/onthegreen_1971-1980)

---

### Recommended Citation

On the Green, "On the Green Vol. 10 No. 14 January 21, 1980" (1980). *1971-1980*. 350.  
[https://ida.gallaudet.edu/onthegreen\\_1971-1980/350](https://ida.gallaudet.edu/onthegreen_1971-1980/350)

This News Article is brought to you for free and open access by the On the Green at IDA@Gallaudet. It has been accepted for inclusion in 1971-1980 by an authorized administrator of IDA@Gallaudet. For more information, please contact [james.mccarthy@gallaudet.edu](mailto:james.mccarthy@gallaudet.edu).



# On the Green

GALLAUDET COLLEGE  
EDWARD MINER GALLAUDET MEM. LIBRARY  
7th & FLORIDA AVE., N. E.  
WASHINGTON, D. C. 20002

A weekly publication for Gallaudet staff & faculty  
Vol. 10, No. 14 Jan. 21, 1980

## Faculty/staff give to Alumni House

Although the organized campaign on campus for the Alumni House began the week of Jan. 14, more than \$37,000 in gifts or pledges had been received by Jan. 11, 1980. Most of these gifts were offered voluntarily or through informal solicitation. Many thanks to all of these early birds. Some others were discouraged from early giving so that volunteers might experience the pleasure of collecting their gifts.

### \$4,000-4,999

Dr. & Mrs. Edward C. Merrill, Jr.

### \$3,000-3,999

Dr. & Mrs. Robert Davila  
Dr. & Mrs. Mervin Garretson  
Dr. & Mrs. Thomas Mayes  
Drs. John S. & B. J. Schuchman

### \$2,000-2,999

Mr. & Mrs. Alan B. Crammatte (in memory of Edith M. Nelson)  
Dr. & Mrs. David Peikoff

### \$1,000-1,999

Mr. & Mrs. Gerald Adler  
Mr. & Mrs. Brooke Bortner  
Mr. & Mrs. Jack Gannon  
Barbara P. Harslem  
Dr. & Mrs. Doin Hicks  
Mr. & Mrs. Paul K. Nance  
Dr. & Mrs. Ronald Nomeland  
Dr. & Mrs. Richard Phillips  
Mr. & Mrs. Donald Pettingill  
Mary Anne Pugin  
Frank Turk  
Herbert R. Woofter

### \$500-999

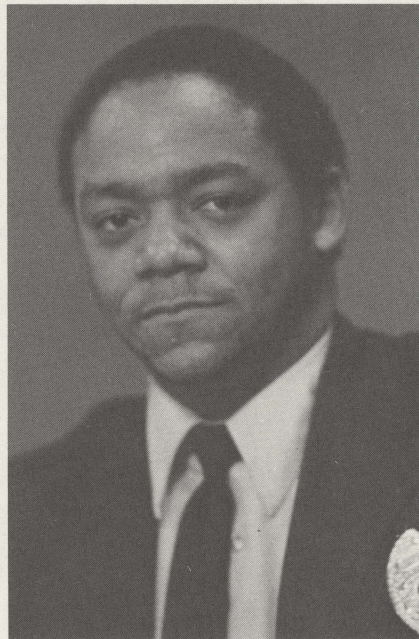
Hortense Auerbach  
Leon Auerbach  
Victoria Dubitsky  
Howard & Gail Levo  
Thomas A. Lillis  
Dr. Horace Reynolds  
Ramon Rodriguez

### \$100-499

Class of 1980  
Gregg Reynolds  
Ernest Spriggs  
Vickie Walter  
Charles Witt

### Under \$100

Adelphi Pot Luck Group (several faculty members)  
Alumni & Public Relations Office  
Bisonettes  
Continuing Education Interns  
Continuing Educations Staff & Friends  
Friends of the Book Store  
Robert Carl Johnson  
Kendall School Staff & Teachers (in memory of John Spellman)  
Ruth Peterson  
Phi Kappa Zeta Sorority  
Lucinda Shupe  
1980 Tower Clock



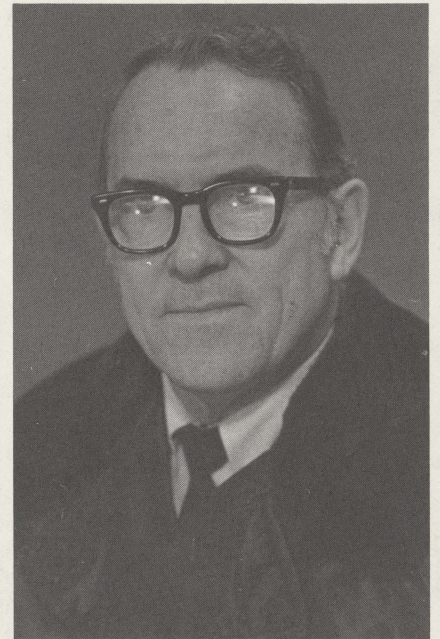
Downey

## Officers of the Month chosen

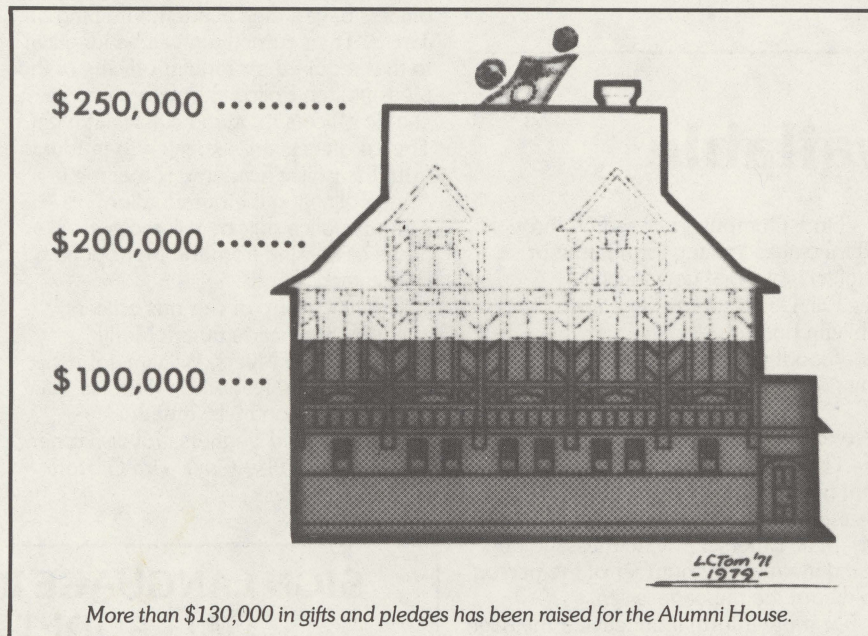
The Department of Safety and Security has chosen Officers of the Month for October and November, 1979.

Keith Downey is being recognized for his extraordinary efforts in the area of crime prevention during the month of October, 1979. Off duty and on his own time, Downey presented a lecture and film to 60 students in Dorm 4 on rape prevention and avoidance. Much valuable crime prevention information was disseminated. Downey's unselfishness, thoroughness and enthusiasm reflect his commitment to serve the campus community.

Billy Holman is being recognized for his outstanding efforts in providing a safe and secure environment at the MSSD complex and his willingness to respond quickly and effectively to emergency situations on campus.



Holman



## Sign film scheduled

*Think Me Nothing*, a film in sign language and voice featuring an all star deaf cast, will be shown at the Gallaudet Auditorium this Friday through Sunday, Jan. 25, 26 and 27, at 8 p.m.

Tickets can be purchased at the Student Union Box Office Monday - Friday from 9 a.m. until 5 p.m. For more information call 5182 or 5183, voice or TTY.

## Professional Day is rescheduled

This semester's Professional Day, originally scheduled for Jan. 24, has been postponed until Feb. 19. Look for more information on planned activities next week.

## College Council sponsors meetings

The College Council will sponsor a series of meetings during spring semester that will be open to both faculty and staff. The project has the support of both Edward C. Merrill, Jr. and the Central Administration.

Goals of the project are to provide members of the campus community with information about programs, give us the opportunity to hear directly from people involved on new, old and changing programs and to provide a forum within which issues can be raised, questions can be asked and suggestions can be made.

Questions concerning the project can be addressed to Mike Kaika, Dorothy Hamberg, Marcine Thomas or Gina Oliva, the coordinating sub-committee members.

## Sign up for training programs

At the end of December, announcements were sent to all staff and faculty members regarding training programs that will be taking place on campus during this semester. These programs will be conducted by speakers with a national reputation and present an excellent opportunity for professional development at relatively low cost. Response has so far been good.

However, in order to make appropriate arrangements, you must register to attend by Jan. 28.

Programs being offered are:

- Facilitating Communication with Deaf People, Feb. 13, 20 and 27, 9 a.m.—12 noon.

- Time Management for Technical and Support Personnel, Feb. 18, 8:30 a.m.—4:30 p.m.
- Time Management for Supervisors, Feb. 19, 8:30 a.m.—4:30 p.m.
- Perspectives on Management for Women, March 14, 8:30 a.m.—4:30 p.m.
- Employee Motivation and Development, April 23 and 24, 8:30 a.m.—4:30 p.m.

Please send your registration and interdepartmental invoice, if applicable, to Room 4, College Hall. For more information contact Sheila Curran, personnel manager, at x5509.



# Serendipity

## Library Bits & Pieces

### College catalog/phone directory microfiche

The Gallaudet College Library has a collection of college catalogs on microfiche produced by the National Microfilm Library. The collection contains undergraduate and graduate catalogs from most of the domestic institutions of higher education in the United States and its territories, as well as catalogs from foreign countries. The two latest editions (78/79 and 79/80) are located in the Career Corner (northwest corner) on the Library's main floor. A microfiche reader and an index accompany the collection. In addition to having the collection on microfiche, some college catalogs are available in book form on the shelves nearby. Catalogs for colleges and universities in the Washington metropolitan area are kept on reserve at the Circulation Desk.

A collection of telephone directories on microfiche called PHONEFICHE is also available in the College Library. Currently about 25 large cities are

included in this collection: Atlanta, Boston, Chicago, Detroit, Houston, Los Angeles, New York City, Philadelphia and Seattle, to name a few. Both white and yellow pages are available. The microfiche are arranged in alphabetical order by state and then by city. A community cross-reference collection is located on the main floor of the Library next to the COM Catalog and near the Circulation Desk. For additional help ask at the Information Desk.

### College Library phone numbers

	Voice	TTY
Main Library Number	5566	5575
Acquisitions	5571	5575
Archives	5582	5579
Circulation	5578	5578
Interlibrary Loan	5574	5575
Library Instruction	5577	5575
Media Room	5580	5579
Reference & Information	5585	5575
Technical Services	5572	5575
Testing Room	5580	5579

### Library Hours, Spring Semester 1980

	Main	Media	Testing
Sunday	1 p.m.-10 p.m.	1 p.m.-10 p.m. (-1 a.m.)*	2 p.m.-10 p.m.
Monday	8 a.m.-11 p.m.	8 a.m.-11 p.m. (-1 a.m.)*	9 a.m.-10 p.m.
Tuesday	8 a.m.-12 midnight	8 a.m.-10 p.m. (-1 a.m.)*	9 a.m.-10 p.m.
Wednesday	8 a.m.-11 p.m.	8 a.m.-11 p.m. (-1 a.m.)*	9 a.m.-10 p.m.
Thursday	8 a.m.-11 p.m.	8 a.m.-10 p.m. (-1 a.m.)*	9 a.m.-10 p.m.
Friday	8 a.m.-6 p.m.	8 a.m.-6 p.m.	9 a.m.-4 p.m.
Saturday	9 a.m.-8 p.m.	9 a.m.-8 p.m. (-10 p.m.)*	9 a.m.-1 p.m.

\*Room closed; TTY Calls only.

## TTY services available

A new 24-hour message service is available in the Washington area for TTY users. The system is computer controlled and features general interest messages such as weather, news and announcements; bulleting board messages that can be entered or read by any users; and private mail messages that can only be read by holders of pre-assigned mailbox numbers.

To use the system, simply dial the telephone number (703) 281-1214 and the computer will respond immediately with a request for a command. Enter the first letter of a command from those shown below followed by a return and the computer will prompt you as you require.

### Available Commands

#### General Messages

W - Weather  
N - News  
A - Announcements  
H - Helpful information on the system  
G - Goodbye: This frees computer for next user.

#### Bulletin Board Messages

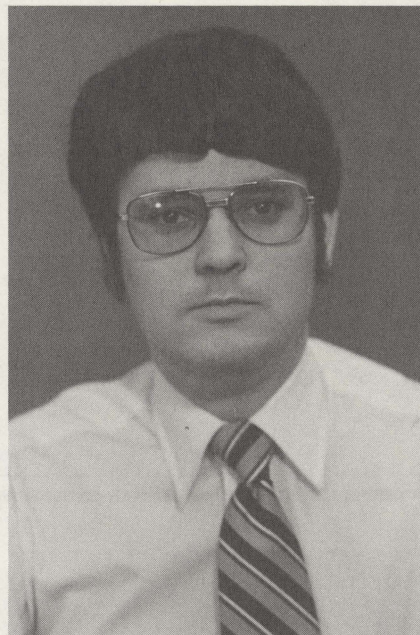
S - Summarize: Lists all messages on bulletin board.  
R - Read: Prints out an entire message.  
E - Enter: Allows you to enter a message. The computer will prompt you for the month, day, from whom and to whom.

F - Find: Computer will search through all messages looking for a name or subject word that you specify.  
K - Kill: Deletes a message from the bulletin board.  
G - Goodbye: Frees the computer for the next user.

#### Private Mail

U - Users: Lists user mailbox numbers that must be used for entering private messages.  
M - Mail: Enters a private message by using the mailbox number of the person to whom the message is sent.  
For more information leave a message for Bob B. on the system or write Virginia TTY, Bob Bruninga, 907 Ninovan Road, Vienna, VA, 22180.

The Fredericksburg Area Hot Line has established a TTY system which will enable them to connect hearing-impaired individuals to human resource agencies in the Fredericksburg area. The service is available 24 hours a day if you have a problem, need information, assistance, or just need someone to listen. Their new number is (703) 373-5111 TTY. This semester's Professional Day, originally scheduled for Jan. 24, has been postponed until Feb. 19. Look for more information on planned activities next week.



**E. Allen Nowell**, assistant chief of Safety and Security here at Gallaudet, has been chosen for inclusion on the 1980 edition of "Who's Who in American Law Enforcement," published by the National Association of Chiefs of Police. The directory is published every three years. The 1980 edition is expected to be completed by summer and copies made available to the Library of Congress, State Historical Library and to more than 23,000 police and sheriffs departments in the United States.

## Security officers attend academy

The Department of Safety and Security has concluded arrangements with the Metropolitan Police Department allowing campus police officers to attend the police academy.

The first group of 14 campus police officers began their academy training on Jan. 8. Their curriculum will be identical to that required for regular officers of the Metropolitan Police although altered to enable officers to attend classes at night. The 14 officers are expected to graduate from the police academy sometime in April. Following their graduation, campus police officers will receive 13 hours of training from the Metropolitan Police each month.

The first group of campus officers attending the academy are Merly Garnett, Wylie Myers, William Johnson, Gerald Brooks, Deborah Gonzales, Billy Holman, Sharon Mills, Muriel Rodriguez, Fred Seghetti, Joyce Turner, Bernard Holt, Flay Gray, Tim Gibson and Allen Nowell.

## Sponsored R&D

### Grant/contract deadlines

Provided below are application deadlines of selected federal programs that offer potential grant or contract opportunities for faculty, staff and graduate students. More details on programs of interest can be obtained from Dr. Glenn Pfau, director, Office of Sponsored Research, X 5030 (voice or TTY).

Deadline	Program
02/14/80	NSF/NIE—The Improvement of Mathematics Education Using Information Technology
02/18/80	USOE—Media Research, Production, Distribution, and Training
02/29/80	USOE—Basic Skills: Parent Participation Program
03/01/80	NSF—Sociology/Economics/Political Science
03/15/80	NEH—Consultant Grants
03/17/80	USOE—Handicapped Research and Demonstration: Student Research
03/25/80	NSF—Science and Technology to Aid the Handicapped

### Weekly program highlight

USOE has set Feb. 29 as the post-mark deadline for the following three Basic Skills Improvements Programs: (1) *Basic Skills in the Schools Program*—supports activities to demonstrate improved delivery of instructional services in the areas of reading, mathematics, and oral and written communication. It is expected that projects will be multi-year in duration, and they must be designed to serve as demonstration models which show promise of replication and validation. An estimated 115 elementary and secondary projects will be funded, with awards ranging from \$50,000 and \$150,000; (2) *Parent Participation Program*—supports activities designed to enlist the assistance of parents and volunteers working with schools to improve the skills of children in reading, mathematics, and oral and written communication. Approximately 15 projects will be funded, with the average anticipated award to be between \$10,000 and \$50,000; and (3) *Out-of-School Basic Skills Improvement Program*—supports efforts to stimulate children, youth and adults to improve their achievement in basic skills.

## SIGN LANGUAGE INSTRUCTION FOR GALLAUDET EMPLOYEES

Jan. 28 to April 17

BEGINNING I*	MW 9-10:30 a.m. JacobowitzRoom 215 College Hall
BEGINNING II*	MW 10:30 a.m.-noon JacobowitzRoom 215 College Hall
INTERMEDIATE I**	MW 1-2:30 p.m. JacobowitzRoom 215 College Hall
INTERMEDIATE II**	MW 2-3:30 p.m. Richey Room 309 College Hall
ADVANCED I**	TTH2:30-4 p.m. Richey Room 215 College Hall

Cost: \$35.00 per student (application and invoice required before first day of class)

Books: \* *Joy of Signing*, Riekehof \$12.95

\*\* *Conversational Sign Language II*, Madsen \$5.95

If you are not sure which level you should sign up for, please set up an appointment with the Department of Sign Communication for a placement interview.

Please submit an application with your interdepartmental. Applications for the above classes may be picked up in the Department of Sign Communication, College Hall Room 213.



# A Message from the President

## The visual arts on Kendall Green

Art takes many forms. We find it in drama, in poetry, in music, in literature, in sculpture and in many other forms. Art is a mirror of mankind, representing his feelings and his thoughts. As such, art must always be an important part of the general education of all persons. To know art is to understand the world and perhaps yourself a little better.

Over the past two years, more attention has been given to the visual arts throughout Kendall Green. Our first real breakthrough came when the Virginia Steele Scott collection in Pasadena, CA permitted five of their best sculptures to be placed on loan here. The loan included three sculptures by Epstein, one by Umlaut and one by Bourdelle. Since that time we have had Jasper Johns prints on display, colorful cut-outs by Matisse and one of Georgia O'Keeffe's oils. At the MSSD, there is currently a display of historic photographs from the Minneapolis Institute of Arts. We have also had on display there a beautiful acrylic sculpture entitled *Dodecker*, which was done by Bruce Beasley and was placed on loan with us by a friend in California. Yes, we are off to a good start, but there is much more to come.

By means of a grant from the National Endowment of the Arts, Gallaudet College has commissioned a major sculpture from one of America's best known artists, Jules Olitski. This is a large steel outdoor sculpture which has already been completed. It is so good that it will be placed adjacent to the new East Wing of the National Gallery until it is ready to be moved to Kendall Green. It will be on the northeast corner of the new Learning Center where it will be passed by a walk going between Hall Memorial Building and the Hughes Gymnasium.

Gallaudet College has also purchased a large acrylic piece molded by Bruce Beasley, similar to the one now on display at the Model Secondary School for the Deaf. In all probability this beautiful sculpture will be placed in the new Learning Center.

Is this all? No, there is more! Before long we will have an opportunity to see

a beautiful, rich watercolor by Millard Sheets. This will hang in the MSSD lobby area where the Georgia O'Keeffe *Red Poppy* was before. We will also have a series of Mexican prints which will reflect the culture of our Latin American friends.

We hope that art on Kendall Green will increasingly become an open door to the wonderful museums and galleries in the Washington, DC area. But more than that, we want Kendall Green to be a part of the rich culture of this city. In other words, in the near future we hope that people will be visiting us to see very stimulating modern art. As the art of our times is an expression of feelings and thought, our visitors will also learn about the dimensions of our intellectual interests. They will, we hope, learn more about the richness of our academic life.

Edward C. Merrill, Jr.



Students view Johns lithographs at MSSD.

## MSSD student writes from England

An MSSD student, 19-year-old Appollinaria Easley, is participating in a year-long experimental international student exchange program. Easley is spending the 1979-80 academic year at the South Thames College in London, England. The following are excerpts from a letter she wrote to Robert Mobley, principal of MSSD:

Dear Mr. Mobley:

Since you are the principal of the School, I am addressing this letter to you . . .

I'm safely at home, here in England. I'm happy and proud to have this honorable opportunity to experience living in another country, adapting to a different culture with a wonderful family for a full year . . .

Let me introduce my family. The Goldsmith family is very happy, private, concerned, honest, humorous, part-time librarian and an honourable secretary of the National Deaf Children's Society. My father, Rainer, is a doctor and teaches at the University of London (physiology professor). My brother, Jonathan is 17 years old. He's likely to be known as an athlete and humorist. Jonathan is a student in school. My sister, Sherona, is deaf like me. She's 19 years old and has enrolled at South Thames College to study sociology while at the same time

## OTG deadlines

Deadline for submitting information to *On the Green* is 10 days before publication date.

ISSUE DATE	COPY DUE TO EDITOR
Feb. 4 (Mon.)	Jan. 25 (Fri.)
Feb. 11	Feb. 1
Feb. 18	Feb. 8
Feb. 25	Feb. 15
Mar. 3	Feb. 22
Mar. 10	Feb. 29
Mar. 17	Mar. 7
Mar. 24	Mar. 14
Mar. 31	Mar. 21
Apr. 7	Mar. 28
Apr. 14	Apr. 4
Apr. 21	Apr. 11
Apr. 28	Apr. 18
May 5	Apr. 25
May 12	May 2
May 19	May 9
May 26	May 16
June 2	May 23
June 9	May 30
June 16	June 6

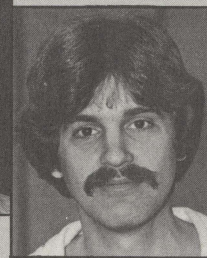
## Personalities

**Mary Powell** is a new secretary with the Division of Education at MSSD. She previously worked with the American Cancer Society as secretary and administrative assistant.

**Dennis L. Raulin** has joined the MSSD staff as LRC assistant, responsible for providing audiovisual services. Before coming to Gallaudet, Raulin worked in Learning Resources at Montgomery College, Takoma Park. He has a BS in Mass Communications.



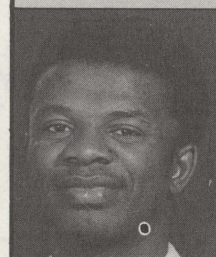
Powell



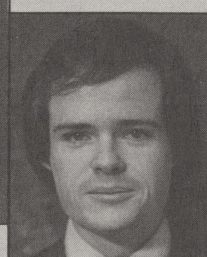
Raulin

**Aristotle Ogoke** has joined the Alumni and Public Relations staff as a writer, replacing Bob Weinstock, who completed coursework for his law degree in December and is now doing his internship with the Civil Rights Division of the Office of the Regional Attorney, HEW, in San Francisco. Ogoke is presently a graduate student here at Gallaudet and will receive his MA in May in Business Administration, with specialization in computer information and application.

**Verna Domich** has also joined the A/PR staff as secretary, replacing Debbie Staffin. Domich has been a part-time employee in this office from time to time in the past and we'd like to welcome her as a full-time employee.



Ogoke



Beach

**Roger Beach** has joined the faculty of the Department of Counseling. In addition to his teaching responsibilities within the Department, Beach will be studying the feasibility of offering a major in Vocational Evaluation of deaf clients through the Department of Counseling. During spring semester he will continue his work on implementing the System of Interactive Guidance and Information on campus. Beach is presently a doctoral student in the Institute for Child Studies/Human Development at the University of Maryland and was formerly a career development specialist here with the Counseling and Placement Center.

on the  
Green

Published each Monday for staff and faculty of Gallaudet College by the Office of Alumni and Public Relations

**APR Director:**  
Jack R. Gannon

**Director of Publications:**  
Laura-Jean Gilbert

**Editor:**  
Vickie Walter

**Contributors for this issue:**

Janet Bailey  
Alan B. Crammatte  
Sheila Curran  
Cathy Dickstein  
Myrtle French  
Carol Georgelas  
Mike Kemp  
E. Allen Knowell  
Glenn Pfau

Gallaudet College is an equal opportunity employer-educational institution. Programs and services offered by Gallaudet College received substantial financial support from the Department of Health, Education and Welfare.



# Historical Notes

by Francis C. Higgins

In the fall of 1902, the College correspondent for the old *Silent Worker*, now the *Deaf American*, reported that on the opening of the 1902-03 academic year in the middle of September, the total enrollment at Gallaudet College was 90 students, including 30 coeds. Fifteen teachers, three of them females, made up the faculty.

One day in September, classes were suspended to permit the students to hike down through fields and over dirt roads to Pennsylvania Avenue to watch the parade of the G.A.R. Encampment — the Grand Army of the Republic. About 30,000 soldiers who had fought in the Civil War (1860-64) passed in review. Other highlights of the day were the exhibitions of fire dancers, tightrope walkers, acrobats and, in the words of the correspondent, "fireworks of the grandest sort."

October saw the election of new officers of the Kappa Gamma Fraternity which had been established only the previous year and of the O.W.L.S., now the Phi Beta Kappa Sorority, which came into existence in 1892, making it the oldest existing Greek letter organization on Kendall Green.

A cloud of gloom settled over the campus on the last Friday of October when the faculty decreed that henceforth there would be no more football games that season! The whole student body was thunderstruck by this announcement.

The ban was the result of a prank on the part of some of the men students. On a previous Friday evening, all the chairs in Chapel Hall were removed to the stage in the rear of the Hall (now the Alumni and Public Relations Office). The pranksters hid the Bible which customarily rested on the lectern on the speaker's platform at the front of the room. In addition, those unlucky enough to be standing in the stairway well under the skylight in College Hall were deluged with a "shower bath."

The faculty did not take kindly to all of these acts of capriciousness. President E. M. Gallaudet summoned the five class presidents to his office in College Hall (now the office of the business manager) and urged them to have the disturbers confess their abominable deeds. But this was in vain.

The Gallaudet College Athletic Association (for men students only) through a committee of five, forwarded to the faculty a petition, requesting a reconsideration of the ban against football. Again it was to no avail; a second appeal suffered the same fate.

The Athletic Association (which had changed its name from the Kendall Athletic Association in 1895) lamented the action of the faculty since the suspension of football would result in the loss of much needed revenue from the games with no funds to begin the baseball season.

Lastly, the cessation of football meant the abandonment of the annual dance in honor of the team. Nevertheless, the College and the students survived the crisis.

With the loss of football, the men students turned to another activity to expend their energy. A Golf Club was organized with four holes placed on the west campus. A basketball team was organized by the coeds, long before there was a men's team!

In November, plays were given on the small stage in Chapel Hall by the Jollity Club (an organization established for women students in 1895) and the Saturday Night Dramatic Club, two of the most popular student societies on campus. Chapel Hall was also the scene of lectures given by male members of the faculty at intervals throughout the academic year. Another organization, the Literary Society, held its biweekly Friday night meetings in the Lyceum, a large room on the third floor of College Hall. The highlight of one program was a debate on the question: "Resolved that the power of the United States will eventually decline as did that of other nations." The affirmative side was victorious. The Society continued to expend 75% of its funds to enlarge its library of popular books.

The Christmas holidays lasted from Dec. 24 to Jan. 5. Those who remained on campus were invited to two social events arranged by the young ladies of the College. On the day after Christmas, President and Mrs. Gallaudet hosted a reception in their home in honor of the coming marriage of their son, Edson, to the daughter of a Missouri senator. Another highlight of the holiday was a public address by a member of the alumni.

## ICED convention plans near completion

Planning for the International Congress on Education of the Deaf to be held in Hamburg, West Germany, Aug. 4-8, 1980 is nearing completion. The ICED, convening every five years, brings together professionals in virtually every aspect of deafness from over the world. As an added convenience to interested participants, the International Congress for the Hard-of-Hearing will convene Aug. 8-10, 1980, using the same facilities as the ICED.

For interested Americans, the Council on Education of the Deaf is sponsoring a series of four tours to the above Congresses. The tours range from side trips to Scandinavia, Austria or Germany to direct travel to and from the Congress.

## Bisons win first game of season

By Ari Ogoke

The Washington Bible College Warriors could not contain the Gallaudet College Bison stampede at the Huges Memorial Gym last night, and the men's basketball team won their first game of the season.

Cheered by about 50 students in attendance, the Bisons overcame a two point deficit at halftime by forcing turnovers, capitalizing on fast breaks, controlling the ball better and producing some very fine plays. The final score was 78-56.

Following their next home game against UDC, the Bisons play their next four games on the road.



Flo Crammatte, national co-chairperson of the Alumni House campaign, and Polly Peikoff, secretary, Alumni & Public Relations Office.

## Calendar

JAN. 21—FEB. 1

**24—COLLOQUIUM**, "Research Proposal on Psychological Test Development, Ushers Syndrome, Genetic Deafness and Vocational Rehabilitation," Dr. McCay Vernon, Powrie V. Doctor Chair, HMB Room 251, 3:00-5:00 p.m.

**25—INTERPRETED DINNER THEATRE**, Demonstration Programs x5598, "My Fair Lady" presented by Harlequin Dinner Theatre, 7:00 p.m.

**27—INTERPRETED THEATRE**, "No Exit" and "Roughian On The Stair," Sphere Theatre. Tickets available from SUB Box Office, x5182.

**31—LECTURE/ DEMONSTRATION**, Don Redlich Dance Company, SUB Cultural Affairs x5182, Auditorium 7:00 p.m.

**FEBRUARY**

**1—DANCE PERFORMANCE**, Don Redlich Dance Company, Auditorium 8:00 p.m. NO CHARGE.

**2—MASTER CLASSES**, Don Redlich Dance Company, 10:00—Technique Class, 11:00—Improvisation, 12:00—Movement for Actors, 1:00—Composition. For information contact SUB Office x5182.

## Jobs Available

For additional information, contact the Personnel Office.

**SECRETARIAL POSITIONS**: Contact personnel for listing.

**CAREER COUNSELOR**: Counseling & Placement.

**ASSISTANT TRAINING SPECIALIST**: Personnel.

**ASSISTANT DIRECTOR**: Counseling & Placement.

**PROGRAM COORDINATOR**: Law Center.

**CAREER COUNSELOR FOR MULTIPLY HANDICAPPED STUDENTS**: Counseling & Placement.

**COMPUTER OPERATOR—TICCIT**: Computer Center.

**DAY CUSTODIAN**: PP-Custodial Services.

**FIRST CLASS ENGINEER**: PP-Central Utilities.

**ELECTRIC TECHNICIAN**:—TICCIT: Computer Center.

**ELECTRONIC TECHNICIAN**: Technical Support Center.

**CAPTIONER II**: TV Department.

**STAFF PSYCHOLOGIST**: Counseling & Placement.

**ENERGY CONSERVATION COORDINATOR**: PP-Utilities.

**WORD PROCESSING SPECIALIST**: MSSD/Adm. Support Services.

**CAMPUS PLANNING COORDINATOR**: Planning Office.

**PLANNING & EVALUATION ANALYST**: Planning Office.

**CAMPUS RESOURCE ANALYST**: Planning Office.

**ASSISTANT-ASSOCIATE PROFESSOR OF AUDIOLOGY AND COORDINATOR OF CLINICAL SERVICES**: Audiology.

**INSTRUCTOR OR ASSISTANT PROFESSOR**: American History.

**FACULTY POSITIONS (2)**: Department of Sign Communication.

**PROGRAMMER**: Accounting.

**ELECTRICIAN**: PP-Maintenance.

**PLUMBER**: PP-Maintenance.

**PSYCHOLOGIST**: KDES.

**PAINTER 1**: PP-Maintenance.

**BUDGET COORDINATOR**: Planning Office.

**ASSISTANT/ASSOCIATE PROFESSOR**: Mathematics Department.

**ASSISTANT/ASSOCIATE RESEARCH PROFESSOR**: Demographic Studies.

**DIRECTOR, PP MAINTENANCE & OPERATIONS**: Physical Plant.

**OFFICE COORDINATOR**: Alumni/Public Relations.

**FACULTY POSITIONS (3)**: School of Education & Human Services.

**ASST. PROFESSOR OF SPEECH COMMUNICATION RESEARCH**: Sensory Communication Research Lab.

**DEAN OF STUDENT AFFAIRS**: Apply to Dr. Barbara Bodner-Johnson, Dept. of Education.

**INSTRUCTIONAL MATERIALS DEVELOPER**: MSSD/KDES.

## Letters

I was reading the Jan. 7 *On the Green*, when I noticed in your article on Gallaudet's administrators that you neglected to mention or rather include the Department of Library and Information Studies under Dr. Shoemaker's responsibilities.

Sincerely,  
C. Burnelle McIntyre