

12-10-1979

## On the Green Vol. 10 No. 10 December 10, 1979

On the Green

Follow this and additional works at: [https://ida.gallaudet.edu/onthegreen\\_1971-1980](https://ida.gallaudet.edu/onthegreen_1971-1980)

---

### Recommended Citation

On the Green, "On the Green Vol. 10 No. 10 December 10, 1979" (1979). 1971-1980. 346.  
[https://ida.gallaudet.edu/onthegreen\\_1971-1980/346](https://ida.gallaudet.edu/onthegreen_1971-1980/346)

This News Article is brought to you for free and open access by the On the Green at IDA@Gallaudet. It has been accepted for inclusion in 1971-1980 by an authorized administrator of IDA@Gallaudet. For more information, please contact [james.mccarthy@gallaudet.edu](mailto:james.mccarthy@gallaudet.edu).



# On the Green

EDWARD MITCHELL GALLAUDET  
7th & FLORIDA AVE., N. E.  
WASHINGTON, D. C. 20002

A weekly publication for Gallaudet staff & faculty  
Vol. 10, No. 10 Dec. 10, 1979

## Professional Sign theatre to perform at Gallaudet

America's first professional sign language theatre for the deaf is on its way to Gallaudet College.

Theatre in Sign is a division of the National Theatre of the Deaf, the world-renowned professional deaf theatre company based at the Eugene O'Neill Theatre Center in Waterford, CT.

Appearing here will be two premier actors from the NTD, Patrick Graybill and Phyllis Frelich. They will enact the roles in the two-character comedy, *The Gin Game*, by D.L. Coburn. *The Gin Game*, which won a Pulitzer Prize in 1977, opened in New York on Oct. 6, 1977, with Hume Cronyn and Jessica Tandy playing the roles of Weller Martin and Fonsia Dorsey. E.G. Marshall and Maureen Stapleton took over the roles in New York while Cronyn and Tandy toured the United States with the play. The Theatre in Sign production with Graybill and Frelich is the only other production licensed to perform in America.

NTD fans will remember Phyllis Frelich in that company's productions of *Songs from Milkwood*, *My Third Eye*, *Journeys* and *Woyzeck*. Pat Graybill has appeared in every NTD production for the past 10 years, including such favorites as *The Three Musketeers*, *The Dybbuk*, *Optimism* and *A Child's Christmas in Wales*. Graybill is currently performing in *Our Town* as the NTD tours Japan, Korea, Singapore, Hawaii and Alaska. Frelich is appearing in *Children of a Lesser God* at the Mark Taper Forum in Los Angeles.

The director of the TIS production is another leading actress, Linda Bove. Miss Bove has been with the NTD for 10 years.

She portrayed the part of Melissa on the popular soap opera, "Search for Tomorrow." Bove can be seen regularly on "Sesame Street" and is also acting in the current NTD production of *Our Town*.

*The Gin Game* is an unusual comedy about old age. Set in a shabby old people's home, the play chronicles the growing relationship between two of the home's occupants, Weller and Fonsia. Ignored by their families and friends, Weller and Fonsia find that all there is to do at the home is watch television, sing hymns or listen to other old people discuss their ailments. To get away from all that, Weller and Fonsia play gin rummy, and they play it with a vengeance. Weller can't stand to lose, but he always does. Fonsia wins game after game, defying the law of averages and Weller's attempts to out-fox her at the card table.

A tour de force for both performers, the play is both funny and sad, wise and foolish and always engrossing as the tension and tenderness between the two card players grow.

A performance of *The Gin Game* will be presented Jan. 19, 1980 at 8 p.m. in the Gallaudet College Auditorium. Tickets are \$2 for students and children and \$4 for all others. Reservations can be made by calling x5606 (voice) or 5608 (TTY) or by sending a stamped, self-addressed envelope to:

Box Office Manager  
Theatre Arts Department  
Gallaudet College - Box 1596  
7th & Florida Ave. NE  
Washington, D.C. 10001

Please make checks payable to Gallaudet College Theatre.



### We'll miss you!

Doris Phelps opens a gift from coworkers while Glenn Compton and Michael Lockhart of the Bookstore look on. Phelps was honored with a party Nov. 30 upon her retirement from Gallaudet after 20 years. She came to Gallaudet in May, 1959 as secretary to the business manager and a few years later was promoted to bursar, responsible for collecting and handling this institution's money through the Student Bank. She held this position for many years, until the death of her husband. At her request, she was assigned to a less demanding position with the Bookstore, where she worked for a short time. Her presence on campus will be missed.

## Sidewalks and trees

You may have noticed that the sidewalks around campus are being sprayed. That's our Grounds crew on the job again, getting ready for winter. Sealer is being sprayed on sidewalks near roads that will be salted when the snows come. If salt is splashed onto the sidewalks, it could erode the concrete unless it's protected.

More trees are also going up around campus. Ten flowering plums have been put in on both sides of the College Hall walkway near the parking lot, and 10 London plane sycamore trees are being planted by Dorm 5. Look for other new trees around campus, also—some are replacement trees and others are following the campus master plan. Flower beds have also been covered with wire mesh in the past few weeks to keep the squirrels from eating the tulip bulbs planted there.

## Employee orientation program scheduled

The Gallaudet staff new employee orientation program has now been expanded. Part 1 will take place as usual every Tuesday from 8:30-10 a.m. and will cover basic information on benefits and College policies. Part 2 will now be offered every other month. It will include an orientation to deafness, give information on the Gallaudet affirmative action plan and compensation system and provide an excellent forum for questions.

New employees will be automatically invited to both parts of the orientation but any other employee who would like to attend Part 2 is welcome. The first new session will happen Tuesday, Dec. 18 from 10-11:30 a.m. in College Hall 309. Call Sheila Curran, x5515, if you want to attend.

## Barnes participates in deaf mail project

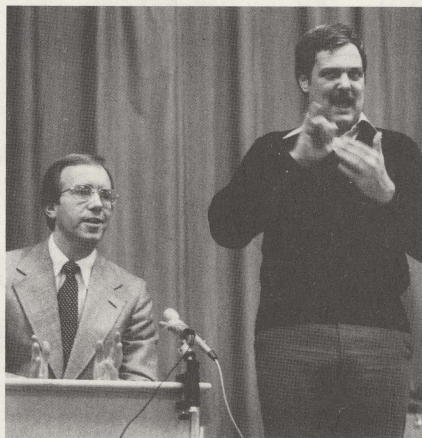
Rep. Michael Barnes (D-8-MD) has announced that his office will participate in an experimental electronic mail service for the deaf. This demonstration project funded by HEW is intended to enhance or potentially replace the present TTY system.

The 150 Washington area persons now participating in the project can access a computer located at Gallaudet. The computer will store messages and deliver them to recipients when they dial into the computer. It will also link up two or more participants in a conversation. The project has been developed by SRI International under a contract from the HEW Bureau of Education for the Handicapped. It also includes a computer

located in the San Francisco area.

Barnes applauded the electronic mail experiment. "Although my office already has two TTYs," he said, "this new system will increase our ability to serve the community because the computer can receive messages 24 hours a day and store them for delivery to us the next morning."

Current Washington area participants include representatives of Gallaudet and other local deaf-oriented institutions, leaders of the local deaf community, government employees and members of the deaf community. For information about participating, call Telecommunications for the Deaf, Inc., Silver Spring, 589-3006 TTY.



Barnes and interpreter at recent Montgomery County forum for the deaf.

## A reminder . . .

Next Monday, Dec. 17, will be the last issue of *On the Green* for 1979. No papers will be published on Dec. 24 or 31. Watch for a special Gallaudet fact sheet which will replace our Jan. 7 issue. Information will be accepted for the Jan. 14 paper and should be submitted to the Public Relations Office by Friday, Jan. 4, 1980.

Are you running out of forms to submit info to OTG? Call Vickie Walter, x5100 (voice or TTY) for more.



# Serendipity

## Library Bits & Pieces

### Archives

by Corinne Hilton

Did you know that—

The early name for this institution was the Columbia Institution for the Deaf and Blind. The nucleus for the new institution, started in 1857, was five elementary school age deaf children.

Gallaudet College came into being on April 8, 1864. The Enabling Act was signed by Abraham Lincoln. The new college was called the National Deaf Mute College.

John Carlin, a deaf man, was the first person to receive an Honorary Degree, which was bestowed upon him during the Inauguration of Gallaudet College, June 28, 1864.

The first graduate of Gallaudet College was Melville Ballard in 1866.

The first graduating class, composed of three men, was June 23, 1869. The commencement exercises were held in the First Congregational Church at 10th and G Streets.

Congress appropriated \$70,000 for the purchase of Kendall Green in 1872.

The Emperor of Brazil, Dom Pedro d'Alcantara, planted the ivy in front of Chapel Hall, June 2, 1876.

Alexander Graham Bell gave the Commencement Address, May 5, 1880.

The first foreign student, Robert S. Lyons from Ireland, was enrolled in 1881.

Women were first admitted to Gallaudet College in the fall of 1886.

The statue of Thomas Hopkins Gallaudet and Alice Cogswell was unveiled June 26, 1889. Special guests included the president and faculty of Johns Hopkins University. The music was played by the U.S. Marine Band under the direction of John Philip Sousa.

The first woman to be given an Honorary Degree was Harriet B. Rogers, founder of the first oral school for the deaf in the U.S. Gallaudet College bestowed upon her the degree of Doctor of Humane Letters in 1889.

The Normal Department on teacher education started in 1891.

The first woman to graduate from Gallaudet College was Alto May Lowman of Maryland in the Class of 1892.

The first issue of the *Buff and Blue* was published Nov. 1, 1892.

Up to and including 1892, the seniors supervised the re-examination of new students who failed to make the required grade in the entrance examination.

Joseph Henry, director of the Smithsonian Institution and famous inventor and scientist, was a consultant to Dr. Gallaudet on the first curriculum for the College.

Dr. A.Y.P. Garnett, the first physician of the Columbia Institution, left his position during the Civil War. He became the Surgeon General of the Confederate Army. He returned to the Institution as its physician in 1885.

The above information was taken from records in the Gallaudet College Archives, located on the lower level of the College Library.

### Library Hours During Exams

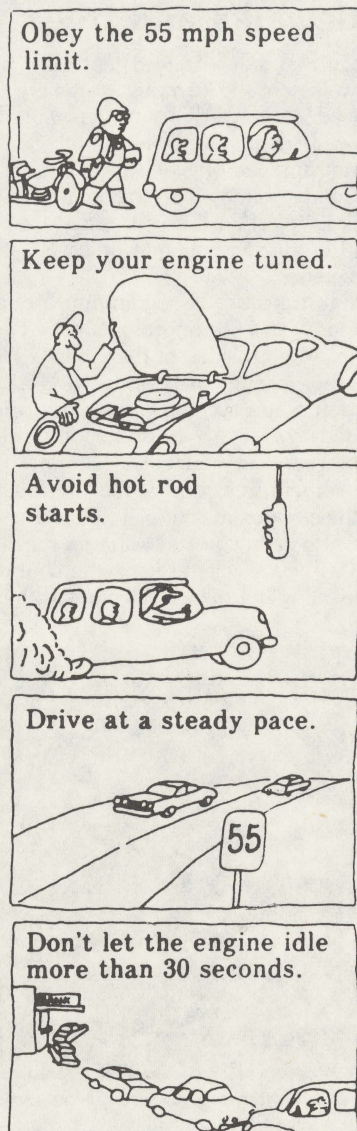
(Dec. 9 - 20, 1979)

*Sunday, Dec. 9	1 p.m.-10 p.m.
*Monday, Dec. 10	8 a.m.-12 midnight
*Tuesday, Dec. 11	8 a.m.-12 midnight
*Wednesday, Dec. 12	8 a.m.-12 midnight
Thursday, Dec. 13	8 a.m.-11 p.m.
Friday, Dec. 14	8 a.m.-6 p.m.
Saturday, Dec. 15	9 a.m.-8 p.m.
Sunday, Dec. 16	1 p.m.-10 p.m.
Monday, Dec. 17	8 a.m.-10 p.m.
Tuesday, Dec. 18	8 a.m.-10 p.m.
Wednesday, Dec. 19	8 a.m.-8 p.m.
Thursday, Dec. 20	8 a.m.-4:30 p.m.

\*FREE COFFEE will be available at 7 p.m. Dec. 9-12 for students studying the Library!!!

**NOTICE** - All materials are due to the Library on or before Friday, December 14, 1979.

## HOW TO GET BETTER MILEAGE FROM YOUR CAR...



Vicki Leon, director, TV Studio.

## Among Ourselves

Rudy Gawlik, Department of Counseling, presented a workshop entitled, "The Concept of Learned Helplessness and Developing Responsibility in Students" at the Pennsylvania School for the Deaf, Philadelphia, at the Nov. 2 meeting of the Eastern Regional Educators of the Deaf.

William McCrone and Rudy Gawlik conducted a "Counselor with the Deaf Self-Evaluation Workshop" for rehabilitation and school counselors attending the Second Elwyn-Nevill Symposium on Sensory Deficits in Philadelphia on Nov. 11-14.

Gerilee Gustason of the Department of Education conducted a three day statewide workshop with Esther Zawolkow of California at Casper, WY in conjunction with the University of Wyoming on Communication Trends and the combination of ASL and Manual English Oct. 24-26. Gustason was also keynote speaker for the Yankee Conference for Deaf Women in Hartford, CT Nov. 16.

Terry Coye and Betty Martin gave a workshop entitled "An Integrated Approach to Academic Advising: How to Muster the Resources You Have to Meet Your Needs" at the National Academic Advisement Association Conference in Omaha, NB on Oct. 16.

## Sponsored R&D

### Grant/Contract Deadlines

Following are selected upcoming grant/contract deadlines of potential interest to the faculty/staff of Gallaudet. For each project opportunity, the application deadline is followed by the initials of the federal agency and the program title.

For further information on any listed project, contact Dr. Glenn Pfau, director of Sponsored Research, x 5030 (voice or TTY).

Deadline	Program
12/31/79	NIE—Program for Educational Research and Development
1/09/80	NSF—Information Dissemination for Science Education (IDSE)
1/16/80	HEW—Cooperative Education Program: New Projects
1/21/80	NIE—Teaching and Learning Research Grants
2/15/80	HEW—Strengthening Research Library Resources: New Projects
2/15/80	HEW/NCHSR—Grants for Dissertation Research Support
2/16/80	BEH—Media Research, Production, Distribution & Training Grants
2/29/80	HEW—Basic Skills in the Schools Program

### Weekly program highlight 2/15/80 Grants for dissertation research support

The intent of this program is to support students enrolled in doctoral degree programs in the social, medical, management or health sciences who intend to conduct or are conducting dissertation research on an aspect of health care policy. This program is meant to encourage individuals from a variety of academic disciplines and programs to employ their analytic skills in the investigation of complex health systems delivery problems. The program encourages small scale research projects and the development of sophisticated new health services researchers. Allowable costs include the investigators salary, direct project expenses such as travel, data processing and supplies, and for institutional grants, direct costs. Funds may not be used for tuition or student fees.

2 credits

**INTERNATIONAL SIGN LANGUAGE** NO CHARGE

Offered during the regular college semester from Jan. 14 through May 14, 1980, Monday and Wednesday from 3:00 to 4:00 p.m.

99-000 *International Sign Language (Gestuno)*, W. Madsen  
Text: *Gestuno*, World Federation of the Deaf  
Prerequisite: Advanced Sign Language standing

A study of the theory and principles of Gestuno as developed by the World Federation of the Deaf Commission on Communication. Intensive practice designed to make the student comfortable in communicating in this language. Readings and lab work.

Applications for the course can be picked up in the Department of Sign Communication, College Hall, Room 213. Applications must be received by Jan. 4, 1980.



# President's Office Notes

## Career luncheons

On Nov. 13 the first of a series of Career Development Luncheons was held with alumnus Philip Bravin as the invited guest. Funded by a gift from Ferris and Company, Inc., the series has been planned in conjunction with the Counseling and Placement Center. Students identified by their career counselors as interested in certain fields are invited to meet informally with a professional in that field. This format allows the students to feel comfortable asking basic questions related to the guest's job/career.

Mr. Bravin spoke of his experiences with IBM, where he now serves as a project manager. The seven students in attendance asked questions related to the nature of the work, Mr. Bravin's functioning as a hearing impaired manager and his feelings about his academic preparation.

## The Decoder

Malcolm Norwood, chief of Captioned Films & Telecommunications, Bureau of Education of the Handicapped, was our guest at a special program Nov. 19. An 80 minute videotape of the April FCC hearing on the decoder was shown; this included information related to the history of the project, the establishment and projected functioning of the National Captioning Institute and the market factors of the device. In addition, the tape included a very interesting panel discussion of representatives from the television networks.

Following the showing of the videotape, Dr. Norwood gave an update of progress and answered questions. He also surprised the audience with an actual decoder.

The decoders will be available through the Sears, Roebuck and Company Spring Catalog. They may be ordered as soon as this catalog is out and will be ready for actual distribution in March, 1980. Twenty hours of prime time captioned television will be available, 10 from the two cooperating commercial networks (five

each from ABC and NBC). The remaining 10 hours will be provided by PBS. TV guides will indicate which programs are captioned with the NCI logo.

The videotape can be viewed by request at the Library media department.

## P. 94-142

On Nov. 29, Edward C. Merrill, Jr. and several superintendents from around the country met with Dr. Edwin Martin, commissioner of the Bureau of Education of the Handicapped. Prompted by the current national situation resulting from PL 94-142, the group shared with Dr. Martin their concerns about the impact of the law on hearing-impaired children and raised questions concerning how the Conference of Executives of American Schools for the Deaf might assist BEH in ensuring that the law more adequately supports the educational needs of hearing-impaired students.

In attendance were Merrill, Dr. David Denton (Maryland), Dr. Victor Galloway (Pennsylvania-Scranton), Dr. Keith Tolzin (Idaho), Dr. Mona McCubbin (Georgia-Atlanta), Hugh Summers (executive director, CEASD/CAID) and Jack Duncan (legislative consultant, CEASD/CAID).

Some of the issues raised were the meaning of an "appropriate education," the fact that states are interpreting "least restrictive environment" as meaning "local public schools," the question of experts in deaf education being involved in placement decisions and the fact that special schools are mentioned as viable alternatives in the law but are excluded from the regulations of the law.

## Calendars available at Central Stores

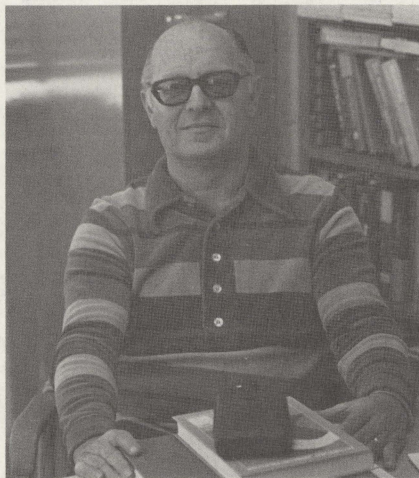
Central Stores has received a supply of 1980 calendars. Those in stock include: Calendar refills, 3-3/4 x 5-7/8, large, 70 cents each. Calendar refills, 3 x 3-5/8, small, 45 cents each. Line Efficient #9 calendars, desk type, \$1.40 each. Three month wall calendar, 10 cents each. Backboard for three month wall calendar, 30 cents each.

Interdepartmentals should be submitted as soon as possible to ensure that your office has a sufficient supply for the coming year.

Central Stores will be closed for inventory from Dec. 10 until Dec. 21, 1979. Only emergency requests will be filled during this time.

## History phone corrections

The temporary telephone directory contains two errors regarding the Department of History. 1) Instruction, Department of History—Ausma Smits, 5378T (not Kurt Beermann, 5378B). 2) Directory listing of Ausma Smits—5378T (not 5379). Please correct any listings to indicate that Ausma Smits, not Kurt Beermann, is chairman of the Department of History.



Congratulations to **John Kubis**, associate professor of mathematics, who has been voted into the Coaches' Hall of Fame of the American Athletic Association of the Deaf.

## Continuing Education scoop . . .

By Nancy J. Pollock

Dr. Thomas Mayes' office announced that a second regional extension center will be established at the Norther Essex Community College, Haverhill, MA. The extension center will serve the New England states and will be patterned after an already existing center in Johnson County, KA.

A nationwide search to replace Al Pimentel, director of the National Academy, has been carried out. Pimentel resigned his position as of Nov. 2 and is moving to the NAD as executive director.

Don Pettingill, director of the Demonstration Programs, and Leon LeBuffe, dean of the College for Continuing Education, spent a week in Jamaica recently consulting with representatives of that island's educational system. They were scheduled to discuss programs for the deaf and make recommendations for program improvement to the Jamaican government.

Demonstration Programs office mailed out their mini-brochures, "MORE" last week. Some of the new classes offered include flying, skiing and a clown course. More than 18 courses will be offered. If you haven't received a copy of the brochure and would like one, contact the DP office at x5597.

Art Roehrig, director of the Deaf-Blind Program, and his assistant Leah Subak recently attended the open house and dedication ceremonies to mark the initiation of educational and vocational rehabilitation services for deaf-blind youth at Marie Kazenbach School for the Deaf in New Jersey.

Roehrig joined several other people in conducting three one-day workshops on Usher's Syndrome in New York City recently.

Roehrig and Subak participated in the second Elwyn-Nevil Symposium on Sensory Deficits—"Myths: 1970's; Realities: 1980's." Roehrig spoke to educators on "How to Serve Deaf-Blind People in Your Settings."

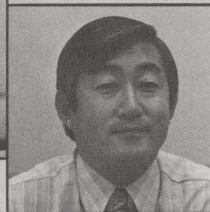
On Nov. 28-30 the two also participated in a national conference on research needs assessment in recreation for handicapped individuals in Arlington, VA.

## Personalities

**Sue Ellis** is the new external affairs officer in the Office of the President. She will be responsible for maintaining liaison with federal agencies; coordinating special events such as commencement for the three schools and dedications of new buildings; handling affairs involving Congress and other outside groups and coordinating Gallaudet's efforts to be represented at meetings of national organizations. Ellis has been at Gallaudet for 10 years as public information director for Pre-College programs; before that she was Washington correspondent for the *Louisville Courier-Journal*. Her new office is on the third floor of House 7, x5132.



Ellis



Uno

**Tad Uno** has been appointed director of the KDES/MSSD Educational Research Laboratory. He previously served as coordinator for research in the Division of Research and Evaluation at MSSD from 1977-1979. Prior to coming to Gallaudet, he served on the faculty of Bowling Green State University in Ohio. He received his Ph.D. in experimental psychology from the University of Southern California in 1966 and has been involved in a wide range of university teaching and research activities since that time.

The new Laboratory is a consolidation of the previous MSSD and KDES research units. Major activities of the Laboratory are in three areas: Child Development Studies, Behavioral and Communication Studies and Tests and Measurements. The Laboratory has approximately 20 full-time employees with offices in KDES and MSSD.



Galluzzo



Williams

**Nicki Galluzzo** is a new diagnostic/prescriptive teacher with MSSD/CSS, responsible for intake procedures, diagnostic testing and remediation. She recently moved here from Uniontown, PA, and has 10 years experience as a special education teacher. Galluzzo has a master's degree in special education and completed the Education of the Deaf program at Western Maryland College.

**Taren L. Williams** is a new secretary here at Gallaudet in Transportation, under the supervision of Fred Kendrick.

## On the Green

Published each Monday for staff and faculty of Gallaudet College by the Office of Alumni and Public Relations.

### APR Director:

Jack R. Gannon

### Director of Publications:

Laura Jean Gilbert

### Editor:

Vickie Walter

### Contributors for this issue:

Janet Bailey

Cathy Dickstein

Len Goldberg

Jim Hull

Yvonne Green

Roxanne Gromelski

Gina Oliva

Glen Pfau

Jo Tracy

Paul Watson

Harry White

### Photographer:

Charles Shoup

Gallaudet College is an equal opportunity employer educational institution. Programs and services offered by Gallaudet College received substantial financial support from the Department of Health Education and Welfare.



# Historical Notes

## A corner of College Hall—now and then

by Francis C. Higgins

Recently I had an opportunity to walk down the roadway between the rear of the Edward Miner Gallaudet Memorial Library and Ole Jim on my way to the new locations of the campus post office and the bank in the basement of College Hall. This area between the Library and the gymnasium once boasted two outdoor tennis courts that doubled as an ice skating rink when the courts were filled with water to a depth of two or three inches.

Being in a reminiscing mood, I marveled at the changes that have taken place since my college days on Kendall Green in the 1930's. Passing by the "new" front entrance (originally the rear entrance) to the College Library, I crossed the roadway and came to the short flight of stairs leading down to the "main entrance" to the temporary quarters of the College Post Office and Bank. This corner of the basement of College Hall once housed a good-sized printing shop.

For many years the printing shop handled all the printing needs of the College. *The Buff and Blue* was published in this shop with all the work from editing to printing to mailing done by the students themselves. The College catalogues and the senior yearbooks were also set and printed in the shop.

The shop was run by Frank B. Smith who was the instructor of printing from 1922 to 1947. In those days, printing was listed in the College catalogue as an elective vocational course for which a student gave four hours a week to master the subject.

In private life Mr. Smith, who was tall and slim with a friendly personality, was a power in Prince Georges County politics. A son, Blair Smith, now a practicing lawyer with offices above the post office in Mt. Rainier, MD, just over the District line, was a member of the College faculty from 1938 to 1941.

On passing through the new entrance to the post office, one comes into a long narrow room nicely carpeted. Three Mergenthaler No. 5 linotype or typesetting machines (gas heated) once stood in a row close by the entrance.

The first door on the right leads into a small room, 10 x 12 ft., that served as Mr. Smith's office. Against the inside wall of this room stood a heavy table on which a hand proof press rested. One corner of the room held cases of type for setting up forms by hand.

From this room one passed to an inside room, 10 x 10 ft., where there were two hand-fed Chandler job presses for running off small orders.

The small room leads to a larger room that housed a big Kelly flat press for printing newspaper-sized orders. Another small job press stood to one side.

On the left another doorway permitted one to pass from the press room back to the linotype room and on to a larger room where today the student mail boxes are located. Back in the 1930s, there was other printing equipment in that room—a stitching machine, a paper cutter devoid of any safety features, a gas-fired heating pot to melt down the metal for the linotype machines and several long tables for folding the printed paper. The room

also served as a storage space for the different types of paper needed.

(Note: Following Mr. Smith's death in 1947, Chester Dobson, Class of 1931 and a former instructor of printing in the Minnesota School for the Deaf, took over the management of the printing shop from 1947 to 1960. During his tenure, he had the shop transferred to the first floor of Ole Jim. Later, the shop was moved to its present location in the Washburn Building where William Stevens, Class of 1942, now supervises all printing operation.)

If one continues eastward through the basement hallway, four doorways will come into view. The two doors on the left bring one to the Post Office. Here in these temporary quarters postal business is transacted in what were once the dressing rooms for the men athletes. It must be remembered that in the 1930s Ole Jim had no dressing rooms. On the right side of the basement hallway, the first room which currently serves as the temporary room for the College Bank was also a dressing room.

The fourth door on the right opens into a larger room that has also been requisitioned by the campus Post Office. This room was formerly the only men's shower room with 10 shower heads. The walls and floor of the room were laid with white tiles. Then, as now, there were two exits from this end of the basement hallway: one was the wooden stairway to the first floor, the second exit took one under the rear porch to the outside in the mall area of College Hall.

If, on emerging from the linotype room one walked straight ahead down another basement hall instead of turning left toward what is now the post office and the Bank, the first door to be seen on the right was the entrance to the Business Office's steel vault where financial records were kept.

The next door on the right leads to a storage room. A few feet further on a third door opens into what was once the shrine room of the Kappa Gamma Fraternity where members, dressed in appropriate gowns, held their semimonthly meetings.

The last room on the right was once the office of the editor of the *American Annals of the Deaf*, the oldest educational journal in the world, first published in 1847. A number of years ago, Prof. Pad-den and I had the pleasure of working in that office for Dr. Doctor, then the *Annals* editor and a member of the college faculty from 1928 until his untimely death in Paris in the summer of 1971.

The rooms on the left side of the basement hallway served as storage rooms. One of them is now the office of the Internal Auditors.

The walls of this basement hallway were lined with book cases holding back copies of the *Annals* as well as reprints of articles from this illustrious periodical for teachers of the deaf.

The end of the hallway continues, on the left, to another long passageway under Chapel Hall to what was then the College kitchen and food storage rooms. But this is another story which bears telling at some future date.

Did you know . . . that football was officially organized at Gallaudet in 1883?



## Peanuts, anyone?

*This is Bartholomew. See how fat he is? He's fat because photographers Charlie Shoup and Frank Werbickas feed him peanuts all the time. He's waiting outside their door for more and if he doesn't get them, he'll probably venture inside. When Shoup and Werbickas run out of peanuts they feed him pretzels. But Bartholomew knows what he likes. Pretzels just aren't the same.*

## Teacher preparation accreditation meeting to be held Friday

An information meeting will be held this Friday, Dec. 14 from 12:30 - 2 p.m. in HMB 251 at which Dr. Yvonne Blanchard of the National Council for Accreditation of Teacher Education will discuss the NCATE Standards for the Accreditation of Teacher Preparation Programs.

In keeping with the mission of Gallaudet to open new opportunities in professional areas for deaf students, a proposal has been submitted to Committee B regarding establishment of an undergraduate teacher preparation program. It is essential that such a program have national accreditation.

All faculty members who have an interest in preparing students to teach at the secondary and elementary levels are invited to attend. Committee B, the Teacher Education Coordinating Committee and the education faculty will also be in attendance. Questions and interaction with the accrediting association will help determine what the implications and requirements are in developing an accredited teacher preparation program.

## Dramatics and dance scheduled at Kendall

The Kendall Dramatics Club and Creative Movement Dance Class will take to the stage for a fun night of entertainment and festivity this Friday, Dec. 14 at 7:30 p.m. in the MSSD Auditorium.

The special holiday program will feature drama, music, poems, songs and dance routines by the KDES students. The production is directed by Elisabeth "Wally" Larson, dance instructor from Alexandria, VA, and Peggy Swift, KDES instructor.

Admission is free and everyone is welcome!

## Jobs Available

For additional information, contact the Personnel Office.

SECRETARIAL POSITIONS: Contact Personnel for listing.

SECRETARY/RECEPTIONIST: Research ASSISTANT: MEDIA UTILIZATION: Library ASSISTANT LIBRARIAN: Tech. Services CAREER COUNSELOR: Counseling & Placement

RESIDENT ADVISOR: Student Life ASSISTANT TRAINING SPECIALIST: Personnel

LRC ASSISTANT: KDES/Instruction ASSISTANT DIRECTOR: Counseling & Placement

PROGRAM COORDINATOR: Law Center CAREER COUNSELOR FOR MULTIPLE-HANDICAPPED STUDENTS: Counseling & Placement

COMPUTER OPERATOR—TICCIT: Computer Center

DAY CUSTODIAN: PP-Custodial Services FIRST CLASS ENGINEER: PP-Central

Utilities ELECTRIC TECHNICIAN:—TICCIT: Computer Center

ELECTRONIC TECHNICIAN: Technical Support Center

CAPTIONER II: TV Department

STAFF PSYCHOLOGIST: Counseling & Placement

ENERGY CONSERVATION COORDINATOR: PP-Utilities

WORD PROCESSING SPECIALIST: MSSD/Adm. Support Services

CAMPUS PLANNING COORDINATOR: Planning Office

PLANNING & EVALUATION ANALYST: Planning Office

CAMPUS RESOURCE ANALYST: Planning Office

ASSISTANT-ASSOCIATE PROFESSOR OF AUDIOLOGY AND COORDINATOR OF CLINICAL SERVICES: Audiology

INSTRUCTOR OR ASSISTANT PROFESSOR: American History

FACULTY POSITIONS (4): Department of Sign Communication

CLERK: Accounting

PROGRAMMER: Accounting

ELECTRICIAN: PP-Maintenance

3RD CLASS ENGINEER: PP-Maintenance

APPRENTICE ENGINEER: PP-Central Utilities

PLUMBER: PP-Maintenance

NIGHT CUSTODIAN: PP-Custodial Services

DRIVER: Transportation

SAFETY & SECURITY OFFICER: Safety & Security

PSYCHOLOGIST: KDES

ASST. PROFESSOR OF SPEECH COMMUNICATION RESEARCH: Hearing & Speech Center

## Calendar

### DECEMBER

**12 - INTERPRETED PERFORMANCE.** "Design for Living," Arena Stage, tickets available Student Union Office, x5182.

**14 - LECTURE.** School of Communication, x5014, Dr. Frank Caccamise, HMB 213, 2 p.m., invitation only.

**15 - SANTA** visits Livingston Square Shopping Center, Oxon Hill, to sign Christmas wishes for hearing impaired children, 10 a.m.—2 p.m. More info at 341-4702.

Did you know . . . that the *Buff and Blue*, Gallaudet's student newspaper, was established in 1892 as a monthly literary issue and evolved into a newspaper format by 1934?