

4-18-1988

## On the Green Vol. 18 No. 25 April 18, 1988

Gallaudet University

Follow this and additional works at: [https://ida.gallaudet.edu/onthegreen\\_1981-1990](https://ida.gallaudet.edu/onthegreen_1981-1990)

---

### Recommended Citation

Gallaudet University, "On the Green Vol. 18 No. 25 April 18, 1988" (1988). *1981-1990*. 344.  
[https://ida.gallaudet.edu/onthegreen\\_1981-1990/344](https://ida.gallaudet.edu/onthegreen_1981-1990/344)

This News Article is brought to you for free and open access by the On the Green at IDA@Gallaudet. It has been accepted for inclusion in 1981-1990 by an authorized administrator of IDA@Gallaudet. For more information, please contact [james.mccarthy@gallaudet.edu](mailto:james.mccarthy@gallaudet.edu).



## Charter Day awards given

Five outstanding deaf individuals were honored at Gallaudet's 19th annual Charter Day awards program held April 9 in "Ole Jim."

The program, emceed by KDES instructor Jo Ann Mackinson-Smyth, was sponsored by the Gallaudet University Alumni Association (GUAA). Guest speaker was Dr. Robert Panara, a Gallaudet graduate and professor emeritus at the National Technical Institute for the Deaf.

Four Laurent Clerc Cultural Fund awards were presented during the program. Ernest Marshall of the Bronx, N.Y., received the Laurent Clerc Award for outstanding social contributions by a deaf person. Marshall is one of the first people to document activities

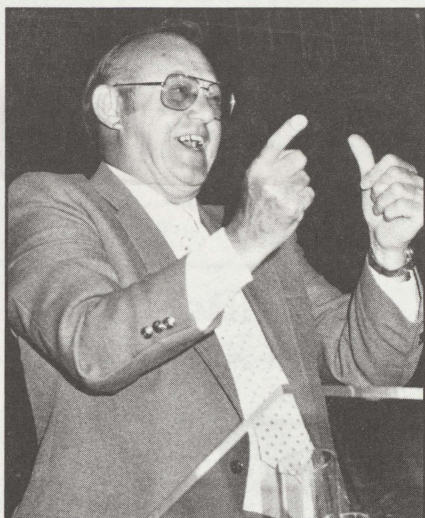
within the deaf community on film, and today he spends much of his time converting film to videotape. Many of his films have been donated to the Gallaudet University Library.

The Alice Cogswell Award for valuable service on behalf of deaf people went to Dr. Malcolm Norwood, '49, for his service in the area of captioned films for deaf people. One of the first deaf professionals to join the U.S. Department of Education, Norwood recently retired as chief of its Captioning and Adaptation Branch.

Knud Sondergaard was presented with the Edward Miner Gallaudet Award to international or national leaders who are working to promote the well-being of deaf people of the world. Director of the Danish Association of the Deaf, he also serves as secretary general of the CISS (Comite International des Sports des Sourds).

Artist William Sparks received the Amos Kendall Award for notable excellence in a professional field not related to deafness. Sparks has produced more than 3,000 portraits, including the one of former president Edward C. Merrill Jr. which is on display in Chapel Hall. He has been commissioned to do a portrait of Dr. Jerry C. Lee, Gallaudet's sixth president.

The GUAA's Outstanding Young Alumnus Award went to Tjoan Tan, '74, who works with the Massachusetts Commission for the Blind in Boston. Born in Indonesia, Tan received a bachelor's degree from Gallaudet in sociology and social work and went on to get a master's in rehabilitation counseling of the deaf from Boston University.



Dr. Malcolm "Mac" Norwood speaks at the Charter Day program after receiving the Alice Cogswell Award.

## SIFE students attend competition

Although Gallaudet's Students In Free Enterprise (SIFE) team failed to walk away with any trophies in a regional competition held in Atlanta April 8, its efforts were outstanding, and the experience was worthwhile, according to the team's faculty sponsor.

"We can be very proud of Gallaudet's team," said Dr. William Varrieur, a professor in the School of Management. "They were spectacular and their presentation was perfect. There's no question that they held their own."

The SIFE team competed with the top young business minds from approximately 70 colleges and universities who were vying for awards. This was the first year that Gallaudet was asked to field a team in the event, which involves hundreds of schools internationally.

"I'm glad we went," said Varrieur. "It was very worthwhile for the students, and they learned a lot. It taught them communication, management, and planning skills, and it built self-esteem. Of course, they were disappointed they didn't win," he added.

The 19 students on Gallaudet's team had been at work since last fall preparing for a 24-minute presentation before a panel of 15 judges, all private business leaders.

The preparations included programming and videotaping a lecture series of eight business-related panel discussions chaired by prominent corporate leaders. However, one of the teams most ambitious projects, "SIFE Week," slated for March 7-11, was cancelled due to the week of campus protests which erupted when a hearing president was hired at Gallaudet.

Only the six students who led the team, plus Varrieur and interpreter Marianne Doremus, an administrative secretary in the College of Arts and Sciences, made the trip to Atlanta.

A copy of the judges' evaluations of the presentations will be sent to participating schools in the next few weeks. Varrieur said that the students are not disheartened by their defeat and they are already working on next year's SIFE activities. Recruitment for a new SIFE team will begin this week.



Don Pettingill, who retired March 31 as special assistant to Gallaudet's Vice President for University Relations after a distinguished 18-year career at the University, was honored April 6 by staff, faculty, and friends with a retirement reception in Chapel Hall. Pettingill is pictured with his wife, Polly.

## Children's play to begin soon

For the 14th consecutive year, Gallaudet's Theatre Arts Department will offer a children's theater production.

This year's presentation, "The House at Pooh Corner," will be held in Elstad Auditorium on April 29 at 7:30 p.m. and on April 30 at 2 and 7:30 p.m.

Written by A.A. Milne, adapted by Bettye Knapp, and directed by Robert Twitchell, "The House at Pooh Corner" is a rendition of the joys, sorrows, and zany happenings of Christopher Robin and his toy animals. The play will be performed in American Sign Language with voice over and is considered appropriate for anyone age 5 or older.

Tickets are \$2 for children and students (including sign language students), \$3 for others, and free for Gallaudet students with ID. Reservations can be made by calling x5500 (V) or x5502 (TDD).

Box office hours are April 25-28 from 2-5 p.m., April 29 from 2-7:30 p.m., and April 30 from noon-7:30 p.m.

## Area students take tours of campus

It's not uncommon these days to notice groups of youngsters walking across campus, looking curiously about as they are led through what is for them a brand new environment.

The groups are usually students from area public and private schools who are touring the Gallaudet campus through a special program that has been offered for the past decade by the Visitors Center.

"The special programs are to orient students of all ages to deafness and sign language," said Visitors Center Coordinator Mary Louise Stansfield.

"Many schools want to set up a field trip to Gallaudet to supplement their own lessons about different languages and cultures, or about people with disabilities. And with more of an emphasis

on TV captioning and public awareness about sign language, trips to the campus have become more popular."

An average of four groups of students, ranging from preschool to college level, visit Kendall Green each month, Stansfield said. Sometimes they eat in the student cafeteria, or see a play, or, if the weather permits, they walk across campus.

The students almost always attend a deaf awareness session conducted by a Gallaudet staff member—often by Sherry Bravin Duhon, assistant coordinator for Pre-College Programs in the Visitors Center.

Duhon, who is deaf, said that the most common questions students ask are related to situations that hearing

*continued on page 2*



Sherry Duhon, assistant coordinator for Pre-College Programs in the Visitor's Center, leads a group of Seat Pleasant Elementary School students on a tour of Kendall Green.





Dr. Peter Wisner, professor emeritus and founder of the Gallaudet Dancers, conducts his popular annual dance workshop for School of Preparatory Study students recently. Wisner's one-week class included social, modern, and sign language interpretation dances.

## Visitors Center gives student tours

continued from page 1

people normally think require hearing and speech, such as how deaf people order food in restaurants, or how they know if a baby is crying.

During the sessions, students are given an initial introduction to sign language through games. They are also told about other important aspects of the deaf culture, such as the proper terminology to use to describe a hearing impaired person, causes of deafness, ways to communicate with deaf people, and careers for deaf people.

The deaf awareness sessions have been successful in changing young people's attitudes, said Duhon. "They come in thinking disabled people can't do this and can't do that, and they go away seeing that they can," she said. "So these sessions teach them to have a positive attitude toward deaf people and people with disabilities in general."

Visitors Center staff realize that occasionally the tour groups can be disruptive to some of the daily activities on campus. "But we feel strongly that it's for a good purpose," said Stansfield. "We eliminate a lot of myths. Many adults today still say 'deaf and dumb,' 'deaf mute,' or the word 'death' instead of 'deaf.' If we can change that through educating these school children, we have accomplished a great deal."

Stansfield asks that the campus community respond to the young visitors in a friendly way. "They just want to learn about deafness, so next time you see, say, a trail of sixth graders walking

through the campus or standing in line in the cafeteria or bookstore, say hello."

The Visitors Center is currently presenting a photographic display in the EMG lobby exhibit area of highlights of visiting student groups.

## Kinner named outreach manager

Gallaudet alumnus Jackie Kinner has been named outreach manager at Gallaudet's newest regional center, based in the College for Continuing Education (CCE) at Gallaudet.

Kinner will coordinate educational events sponsored by Gallaudet in the District of Columbia, Maryland, Virginia, Delaware, Indiana, Michigan, Ohio, Pennsylvania, and West Virginia.

She will also develop and maintain networks of resources, conduct needs assessments, and supervise a long-range development plan.

In her role as outreach manager, Kinner will serve as a link between CCE staff, who develop programs for dissemination throughout the United States, and sponsors who wish to bring programs to their communities. The regional center serves deaf adults, parents, educators, professionals, and the general public.

Kinner, also an actress and television production assistant, previously served in a variety of rehabilitation, counseling, and public relations positions at Gallaudet and in Los Angeles. She holds bachelor's and master's degrees from Gallaudet in psychology and rehabilitation, respectively.

## Announcements

Gallaudet University staff and faculty contributed \$19,741 to the 1988 Combined Federal Campaign (CFC). Although the University did not achieve its goal, it extends thanks to employees who contributed. CFC Vice Chairwoman La Varne Hines extends a special thanks to all coordinators and keyworkers in the campaign.

The University Center will hold its annual Crafts/Flea Market on Friday, April 22, from 10 a.m. to 6 p.m. in Ely Center. For more information, call Hillel Goldberg at x5144.

Programs in Adult and Community Education (PACE) has discount coupons for the Sugarloaf Mountain Arts and Crafts Festival to be held April 29 through May 1 at the Maryland State Fairgrounds in Timonium, Md. Admission is \$4 or \$3.50 with the coupons. For more information, call PACE at x5044.

Gallaudet will recognize Secretaries Week April 25-29 with a series of activities, beginning with a luncheon at noon on April 25 in Hughes Gym, hosted by President King Jordan. Secretaries will be given release time for events throughout the week, and calls can be transferred to several recordings throughout campus. More information will be provided later.

The captioned film "Tex" will be shown on April 21 at 7 p.m. as part of the Prince George's Community College

## Faculty and staff funding sought

Gallaudet faculty and staff members should receive a letter this week asking them to contribute to the Annual Faculty and Staff Campaign by June 30.

Participation in the campaign has risen from 2 percent of all faculty and staff in 1985 to 25 percent last year.

The schedule of the Faculty/Staff Campaign is being changed to align the campaign with other programs related to individual donors. Faculty and staff are being asked to make a cash gift before June 30. Beginning in September, pledges will be solicited for the 1988-89 academic year.

The goal is 35 percent participation, an increase of more than 10 percent over previous totals. Gifts received before June 30 will be recognized in this year's Honor Roll of Donors.

Handicapped Affairs Organization's spring 1988 free film series. All films will be shown at Prince George's Community College, Rennie Forum, Largo Student Center, 301 Largo Rd., Largo, Md. For a complete schedule, call 322-0845 (V) or 322-0122 (TDD).

The University Theatre of the University of Maryland at College Park will present an interpreted performance of "The Tempest" by William Shakespeare at Tawes Theatre on April 30 at 8 p.m. Reservations as early as 30 days in advance are recommended. For reservations, call 454-2201 (V/TDD), 11 a.m. to 4 p.m.

Arena Stage's production of the Marx Brothers' "The Cocoanuts" will be interpreted by Jean Lindquist and Elouise Oyzon with Bill Ennis as sign master on April 30 and May 19 at 8 p.m. Early reservations are recommended. To order tickets, call 484-0247 (TDD) or 488-3300 (V).

"Deaf People Around Today's World" will be presented by Yerker Andersson as part of the Visiting Distinguished International Speakers' Program at the California State University, Northridge, on May 2 from 4-6:30 p.m. Andersson is president of the World Federation of the Deaf and a professor of sociology and social work at Gallaudet. For more information, call (818) 717-5052.

A lecture on "Paternalism, Deaf People, and the Third World" will be presented by Powrie V. Doctor Chair Harlan Lane on April 25 at 2:30 p.m. in "Ole Jim." The lecture is free to all members of the campus community.

## Classified Ads

**FOR SALE:** '87 Toyota Corolla, power steering and brakes, FM/AM radio w/cassette. Call Cindy, x5096.

**WANTED:** Basement apt., prefer Laurel area. Call Cindy, x5096.

**WANTED:** Mature, nonsmoking, professional or graduate-student female to share apt. w/2 working women, available May 1. Call Doris, 779-0833 after 6 p.m.

**FOR RENT:** Mobile home at Fenwick Island, near beach, kitchen w/DW, 2 full baths, AC, sleeps 6, community pool and tennis, \$325/wk. or \$50/night. Call Beth, x5247 or 498-4521 (TDD) eves.

**FOR RENT:** Large room in house 10 min. from Gallaudet, inc. AC, W/D, large yard, swimming pool, \$250/mo. or \$187/mo. if share room. Call Sara or Janet, 322-4151 (V/TDD) or Sara, 459-7588 (TDD) eves.

**FOR SALE:** '83 4-dr. Ford Escort, AM/FM cassette stereo, AC, clean, good cond., BO. Call Donna, 292-0051 (V/TDD) after 7 p.m.

**FOR SALE:** '88 Boston AAAD Basketball Tournament combo tickets, \$25 each; unused UNI-PTC modem, \$325. Call Sam, x5040 or 345-2015 (TDD).

**WANTED:** Nonsmoking housemate(s) to share townhouse in Seabrook, Md., 1 or 2 bedrooms w/pool, 6-mo. lease, available May 1. Call 794-5758 (TDD).

## Job Openings

**Some of the advertised positions may already be filled.** The list below includes only new staff and faculty openings and does not represent all jobs available. To get a recorded message describing the complete list, call x5358 or x5359 (TDD).

TEXTBOOK ACQUISITION CLERK:

Bookstore  
COMMUNICATIONS TECHNICIAN: Computer Services  
INTAKE PROCESSOR: EPOC  
CUSTODIAN: Physical Plant

on the  
**GREEN**

Published each Monday for the staff and faculty of Gallaudet University by the Department of Publications and Production.

### Editor

Vickie Walter

### Editorial Staff

Todd Byrd

Lynne McConnell

### Photography

Chun Louie

Johnston Grindstaff

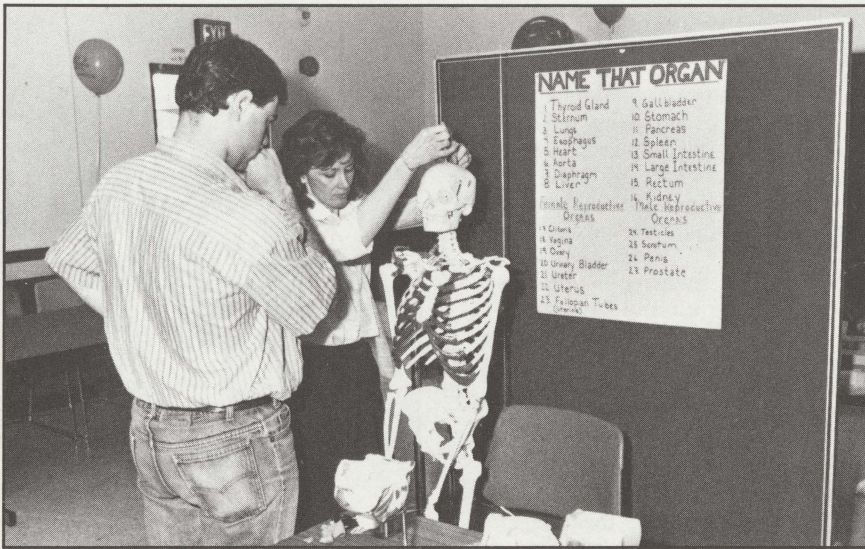
Kelly Butterworth

### Desktop Production

Marie Emmanuel



Gallaudet University is an equal opportunity employer/educational institution. Programs and services offered by Gallaudet receive substantial financial support from the U.S. Department of Education.



Susan Marullo, chairwoman of the April 6 Health Fair sponsored by Student Health Services, sets up a booth with the help of a student. Booths by on- and off-campus groups were featured.