

1-12-1987

On the Green Vol. 17 No. 12 January 12, 1987

Gallaudet University

Follow this and additional works at: https://ida.gallaudet.edu/onthegreen_1981-1990

Recommended Citation

Gallaudet University, "On the Green Vol. 17 No. 12 January 12, 1987" (1987). *1981-1990*. 285.
https://ida.gallaudet.edu/onthegreen_1981-1990/285

This News Article is brought to you for free and open access by the On the Green at IDA@Gallaudet. It has been accepted for inclusion in 1981-1990 by an authorized administrator of IDA@Gallaudet. For more information, please contact james.mccarthy@gallaudet.edu.

on the GREEN

A weekly publication for Gallaudet University staff and faculty

January 12, 1987 Vol. 17, No. 12



Serving children at a Sertoma Christmas party at KDES are (left to right) Doug Carson, Northeast Ford; Jim Barnes, Administration and Business; and Denise Sullivan, Personnel. Doin Hicks (right), Institutional Research, Planning and Evaluation, looks on.

January agreement to establish basis for efforts in Latin America, Caribbean

The Pan American Health Organization (PAHO) and Gallaudet, through the International Center on Deafness (ICD), will sign an agreement in January that will establish a regular basis for coordination of activities related to deafness in Latin America and the Caribbean.

The PAHO, the regional office of the World Health Organization, is a public international organization devoted to health in the Western Hemisphere.

The agreement will be signed by President Jerry C. Lee and Dr. Carlyle Guerra De Macedo, director of PAHO.

The goals of the agreement are to increase awareness and understanding of deaf people, their language and culture; diminish preventable deafness; improve the integration of deaf persons into the normal activities of society, including employment and education; and establish deafness as an issue requiring a comprehensive focus, including prevention, treatment and education.

Under the agreement, Gallaudet and PAHO will conduct research on the genetic causes, epidemiological occurrence and demographic distribution of deafness. Research will be done on appropriate technologies for detection and prevention of deafness and in the education of deaf persons.

Gallaudet and PAHO will also collaborate in the development and training of human resources to work with deaf persons; the implementation of educational campaigns on the prevention and medical treatment of deafness; and the education and rehabilitation of

deaf persons. This will be done by exchanging information and technologies; coordinating activities in Latin America and the Caribbean; cosponsoring conferences, seminars and workshops; conducting research; assessing services; and setting up a network system with the countries of the region.

Work on this project will begin early in 1987 and continue until the majority of goals are accomplished.



Holly P. Glass was named director of Public Relations (PR) last month. Glass was formerly vice president of the broadcast services division of Gray and Co. The PR office is now located in the EMG Building.

New Deaf Studies Program to begin in fall as sociology/social work minor

After more than two years of planning, a Deaf Studies Program will become a reality at Gallaudet next fall.

A proposal recently passed by the Faculty Senate will establish a minor in deaf studies within the Department of Sociology and Social Work. Yerker Andersson, a professor in that department, will coordinate the program.

Designed to combine with any major, the 18-credit minor will involve required courses offered by various academic departments on campus. Those courses include sign systems in communication, psychology of deafness, the history of deaf people, sociology of deaf people and a deaf studies seminar.

Elective courses will include deaf culture in America; comparative poetics: ASL and English; and the nature of mental illness: mental health programs for deaf people.

The program's objectives include providing a scientific approach to questions about deaf people, evaluating their history and changing needs and surveying their contributions to the sciences, humanities and various professions.

The idea of a deaf studies program was formally introduced at a 1984 meeting of the Deafness Related Concerns Committee, now called the President's Council on Deafness (PCD).

According to Harvey Goodstein, professor of mathematics and computer science, who was then chair of the

council, "the members felt that there was a lack of understanding among themselves as deaf people, and that a Deaf Studies Program would focus on the deaf community and its unique culture as something to be proud of."

A task force appointed in 1984 considered issues such as whether a deaf studies program should be offered as a major, which departments might be involved and if such studies would lead to career opportunities. The members of the task force included Gallaudet community members Barbara Kannapell, Paul Johnson, Barry Crouch, Robert Williams, JoAnn Mackinson Smyth, Trent Batson, David De Lorenzo, Yerker Andersson, Scott Lidell, Martina Bienvenue and Harvey Goodstein.

The group investigated study programs related to blacks and women, as well as deaf studies programs established at California State University, Northridge and Boston University.

Dr. Russell Adams and Dr. Melvin Williams, directors of Afro-American Studies at Howard University and the University of Maryland respectively, were among scholars who shared their experiences with the task force.

"Existing deaf studies programs seemed to be geared to hearing people," said Kannapell. "The program at Gallaudet will focus on deaf peoples' desire to study deaf culture."

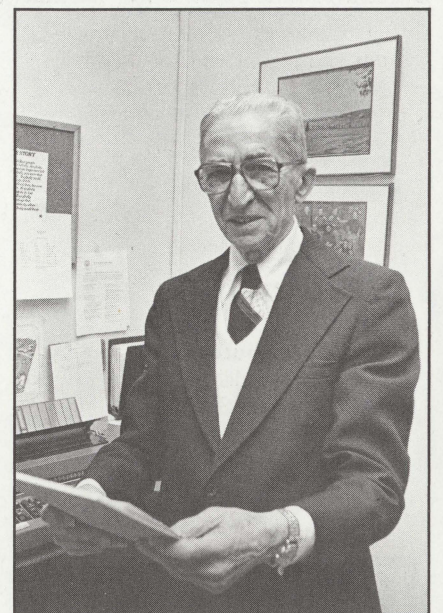
University of Alberta, Canada, creates endowed chair to honor David Peikoff

The University of Alberta in Edmonton, Canada recently established the David Peikoff Chair of Deafness Studies, named after Gallaudet graduate David Peikoff.

The endowment for the chair was supported by the Office of the Secretary of State for Canada, many individuals and numerous major foundations and corporations. Further support is expected from the Department of Advanced Education of the Province of Alberta.

Myer Horowitz, president of the University of Alberta, said in a letter to Dr. Peikoff that establishment of the chair "places on record our thanks to deaf and hard of hearing people for their support and marks our respect for your role in promoting equality of opportunity for deaf and hard of hearing people in Canada."

Dr. Peikoff, who lives in Greenbelt, Md., was born hearing in a small village



Dr. David Peikoff

continued on page 2

CCE enrollments take leap in '86

Enrollments in the College of Continuing Education (CCE) programs nearly doubled in the past year, according to a year-end report summary by CCE Dean Roslyn Rosen.

Factors contributing to the jump in enrollments included the opening of two additional regional centers; the hiring of new CCE personnel; and the reorganization of CCE. Also cited were increased faculty participation in outreach activities, both on and off campus.

Dr. Rosen's summary notes that the CCE revenue is at a record \$546,974 plus approximately \$50,000 in grants. The monies represent more than 25 percent of the CCE's budget.

Program highlights for the past year include—in addition to the increased enrollments and the establishment of the two new regional centers—computerization of office operations and registrations; assistance to the University with outreach database information and reports; the initiation of a "train the trainers" series; and the development of an outreach master schedule.

Primary goals for the coming year are to maintain enrollments; continue quality services; intensify faculty involvement; and upgrade revenue/cost-effectiveness.

New 'Deaf Mosaic' is on Frank Bowe

This month's edition of "Deaf Mosaic" (#210) features Dr. Frank Bowe, a deaf rights activist who recently published his autobiography, "Changing the Rules."

Also featured are stories on Georgia farmer Steve Miller, Dr. Wesley Lauritsen, a long-time Minnesota deaf educator and coach, and two young deaf women who walked across America. This month's "Deaf Portrait" is on Angeline Fuller Fischer, a deaf feminist and poet.

Check listings for broadcast times.

On the GREEN

Published each Monday for the staff and faculty of Gallaudet University by the Department of Publications and Production.

Editorial Director
Jim Stentzel

Editor
Nancy Moore

Writer
Mary Johnstone

Contributors
John Millikin
Ronald Sutcliffe

Photographer
Chun Louie



Gallaudet University is an equal opportunity employer/ education institution. Programs and services offered by Gallaudet University receive substantial financial support from the U.S. Department of Education.



Dr. and Mrs. Jerry Lee (right) greet guests in House One at their annual Christmas party.

Newly endowed chair created to honor '29 Gallaudet graduate David Peikoff

continued from page 1

in the south of Russia. At the age of 5 he became lost in a snowstorm and nearly froze to death. He recovered after a long illness, but he lost his hearing.

When Dr. Peikoff was 6, his family moved to Canada, where he entered the Manitoba School for the Deaf. He later attended Gallaudet, graduating in 1929. For 22 years after leaving Gallaudet Dr. Peikoff worked in Canada to enable other deaf students to attend Gallaudet. He began the McDermot Scholarship Fund, served as chair of the Canadian Deaf Scholarship Fund and was active in numerous organizations for deaf people.

In 1950 he received an honorary master of arts degree from Gallaudet. He served as president of the Gallaudet College Alumni Association (GCAA) from 1954 until 1961, when he became chair of the GCAA Centennial Fund.

From 1967 until his retirement in 1970, Dr. Peikoff served as Gallaudet's

director of development. In his various capacities, he has raised more than \$1 million for the University.

Since his retirement, Dr. Peikoff has continued his involvement by serving as a consultant and volunteer in the Office of Alumni Relations and Advancement.

Dr. Peikoff and his wife Polly are currently visiting in California. In a recent telephone interview, Polly said, "It's natural that we are thrilled and excited by the news [of the Peikoff Chair]. He never dreamed of such an honor being awarded to him. It's a wonderful thing to happen to a deaf man."

IBM-AT computers require new batteries

The IBM-AT personal computer has an internal battery that controls the computer's real-time clock. These batteries have a life span of one to three years.

Many of Gallaudet's IBM-ATs are now one to three years old. Battery failure could cause the formatting memory of the computer to shut down, requiring total computer configuration. A warning sign of battery failure is when the computer begins showing less accurate date and time.

Anyone experiencing such difficulty should call the Computer Services PC and Terminal Support Group, x5396. When necessary, the \$30 battery will be replaced.

(Portions of this article were taken from "Service Guide," Summer 1986.)

FERS plan delayed

Technical amendments recently signed by President Reagan will delay the implementation of the new Federal Employees Retirement System (FERS) thrift accounts until April 1.

The Personnel Office will provide more information regarding implementation of the accounts as it becomes available.

On the Green, Gallaudet Today move under Publications, Production Dept.

Beginning with this issue of *On the Green* and the spring issue of *Gallaudet Today*, both publications are produced by the Publications and Production Department (PPD), directed by Laura-Jean Gilbert in the Division of University Relations.

On the Green and *Gallaudet Today* staff members will continue to be located in Chapel Hall until new office space is found. Until further notice, the telephone number also remains the same (x5100).

A consulting firm recommended last spring that the two publications be moved to a new office to reflect their University-wide, and not just alumni-related, roles. The Central

Administration accepted the recommendation last summer.

All inquiries regarding *On the Green* should be directed to Nancy Moore, the new editor, or Mary Johnstone, the staff writer. Jim Stentzel becomes *OTG's* editorial director and continues as editor of *Gallaudet Today*.

For the first time in many years, the staff and faculty paper is being produced totally on campus. Beginning with this issue, *OTG* articles (on computer disks) will be provided to PPD staff members in the Print Shop for typesetting, layout, stripping, plating and printing.

WGD participants prepare for Norway

A delegation of 20 athletes, coaches and officials will assemble at the U.S. Olympic Training Center in Lake Placid, N.Y. on Jan. 25 to begin training prior to departure to Norway on Feb. 3 for the 11th World Winter Games for the Deaf.

Approximately 250 athletes from 14 nations will participate in the games, held by the Comité Internationale des Sports des Silenceux (CISS), in Holmenkollen, Oslo, Norway from Feb. 7 to 14. The competitions include Alpine (downhill, slalom and giant slalom) and Nordic (cross country) events plus skating.

Nine members of the U.S. team will participate in Nordic and three in Alpine competitions. Gallaudet student Kenneth Litherland, a senior from New Mexico, will make his second try in the World Games in Alpines. Gallaudet alumnus Linda Tucker Murashige, Class of 1979, will also compete in the Alpines.

Officials from Gallaudet leading the U.S. team will be Dr. Ronald Sutcliffe of the Office of Business Services and Dwight Benedict of the Residence Life Office, who is serving as the winter team director. In addition, Jerald Jordan of the Records Management Office will be in attendance as the CISS president, and Cynthia Fernandes of the Department of Audiology will serve as a CISS audiologist.

Selection for the U.S. team was made in January 1986. Alpine team members attended training camp at Mammoth Mountains in California in June, and the Nordic team trained in Yellowstone Park during Thanksgiving weekend. The training programs were made possible by the American Athletic Association of the Deaf through a grant from the U.S. Olympic Committee.

Jobs Available

Below are recently listed staff openings. For a complete list, call the job recording, x5358 or x5359 (TDD).

TEACHER, BUSINESS EDUCATION: MSSD
TEACHER, PRE-SCHOOL: KDES
COORDINATOR, PROFESSIONAL AND COMMUNITY TRAINING PROGRAM: National Academy
FAMILY LIFE PROGRAM DEVELOPMENT SPECIALIST: National Academy
TUTORIAL SPECIALIST/SUPERVISOR: Tutorial Center
COORDINATOR: ADULT BASIC TRAINING: Programs in Adult and Community Education
COMMUNICATION SPECIALIST/SIGN LANGUAGE: KDES
WORD PROCESSING SPECIALIST: Office of Sponsored Programs
OFFICE CLERK: Dean's Office, College of Arts and Sciences
EDITORIAL ASSISTANT: Center for Curriculum Development, Training and Outreach
DRIVER: Transportation Services

Classified Ads

FOR RENT: 2-BR townhouse, Rt. 29, Silver Spring, 1 1/2 baths, ceiling fans, W/W carpet, W/D, CAC, beautiful backyard view. No pets, \$750/mo. Call Dale, x5419 or 890-3256 (TDD).

FOR SALE: '80 Chevy Caprice classic, AM/FM radio, stereo cassette player, 52K mi., \$3,000/BO. Call JoAnn, x5292.

FOR SALE: '83 Datsun King Cab truck, 5-spd., 23K mi., sunroof, AM/FM radio, diesel engine, exc. cond., \$4,500/BO. Call Tony after 5 p.m., 890-2752 (TDD).

FOR SALE: 2 Stratolounger reclining chairs, \$25 each; twin beds (mattresses, box springs, frames), \$25 for both. Call Leonard, x5488.