

9-23-1985

On the Green Vol. 15 No. 46 September 23, 1985

Gallaudet University

Follow this and additional works at: https://ida.gallaudet.edu/onthegreen_1981-1990

Recommended Citation

Gallaudet University, "On the Green Vol. 15 No. 46 September 23, 1985" (1985). *1981-1990*. 226.
https://ida.gallaudet.edu/onthegreen_1981-1990/226

This News Article is brought to you for free and open access by the On the Green at IDA@Gallaudet. It has been accepted for inclusion in 1981-1990 by an authorized administrator of IDA@Gallaudet. For more information, please contact james.mccarthy@gallaudet.edu.

Bookstore crush finally slows after super-busy month

The crush is still on, and it probably won't abate for another week.

Although College Bookstore personnel are no longer having to lock the doors in order to control the number of people in the store at a given time, the lines remain long, some tempers stay short and everyone will be glad when things settle down.

"At times it's been a disaster," sighed Lana Lewis, supervisor of the bookstore during a rare break recently. Short one key person on her staff of seven full-time employees, Lewis and her secretary, Stephany Galich, have been doing double duty for the past month as things geared up for the start of school—and since then.

Lewis, who has been supervisor since last October, estimated that on one of the busiest days recently the store took in \$34,000. Bookstore hours were extended from 4:30 to 8:30 p.m. for the rush, and additional student workers were added. Up to 12 students work part-time at the store and, laughed Lewis, "They all seem to have classes at the same time."

Although the bookstore began preparing for the fall rush back in March, things got hairy anyway because of wrong book orders and late orders.

Lewis sent memos and book adoption forms to faculty members last March seeking information on which books to order, how many and whether the books were needed for the second semester. Some of the adoption forms, which should have been returned by May, are still showing up, and "that's created a lot of problems for us," said Lewis. "We might have done it too early," she added. Staff members are now developing new procedures for faculty members to order books.

"The biggest problem," said Lewis, "has been not being able to contact faculty about problems with orders and finding out what they want to do about it. We try to get it done before they leave [for summer vacation]. The publisher says the books are out of print and the teacher is in Barbados, or England, and won't be back until the day classes start. . . ."

Lewis said she's gotten to know a lot of faculty members in recent weeks, adding, "Most of them are extremely patient." She and her staff will begin doing inventory in coming weeks, and then start the preparation for the second semester.

She estimates that the bookstore will take in about \$1.1 million this year. Approximately \$300,000 of that amount comes from the store's mail-order sales.



Lou Brown, right, and Aloysius Bibum, left, both of the International Center on Deafness, greet representatives from 14 African countries at a Sept. 16 reception in "Ole Jim." The affair marked the opening of the International Training Program/Deaf Education for Sub-Saharan Francophone Africa. The three men in the center, drinks in hand, are embassy attaches: Mr. Findano of Burundi, Lamine Boye of Senegal and Mr. Nkwenti of Cameroun.

National Academy among sponsors of major conference on deaf adolescents

The deadline is fast approaching for submission of abstracts of proposed papers, symposia or poster sessions to be presented at the 2nd National Conference on the Habilitation and Rehabilitation of Deaf Adolescents.

The conference will be held April 28-May 2, 1986 at the Shangri-La Resort in Afton, Okla. Abstracts should be submitted by Oct. 1—next Tuesday.

The conference program committee is seeking proposals that focus on exemplary programs and innovative approaches to the habilitation and rehabilitation of deaf adolescents among the following topical areas: transition from school to work, social skills training, adolescents with emotional/behavioral difficulties, minority group adolescents and families, development of residential dormitory personnel, substance abuse, psychological assessment, legal issues and juvenile delinquency, alternative placement programs and parent education and counseling.

The National Academy and the Gallaudet College Regional Center at Johnson County Community College in Overland Park, Kans. are two of the conference cosponsors along with the Oklahoma Commission of the Deaf and Hearing Impaired, University of Arkansas Rehabilitation Research and Training Center on Deafness, American Society for Deaf Children, American Deafness and Rehabilitation Association, Boys Town National Institute for Communication Disorders in Children and the

Conference of Educational Administrators Serving the Deaf.

The National Academy will focus primarily on workshops and seminars on alcohol and drug abuse among deaf adolescents. Anyone interested in participating or making presentations in the area of substance abuse should contact Dr. Corrine Jensema, x5480.

A typed 500-word abstract of the proposed objectives and contents of each presentation should be sent to Glenn B. Anderson, Director of Training, Research and Training Center on Deafness, 4601 W. Markham, Little Rock, AR 72205. Proposal makers will be informed of acceptance by December.

Organizers anticipate that the conference proceedings will be published and disseminated nationally. Limited funds may be available for travel expenses of workshop presenters.

For more information on the conference in general, contact Dr. Howard Busby, x5483.

Dr. Lee, College leaders 'retreat in order to advance'

President Jerry C. Lee and members of the Central Administration and Council of Deans discussed a wide range of goals and concerns during a recent four-day retreat at the Hunt Valley Inn in Hunt Valley, Md.

One of the major concerns of those attending the retreat was continued congressional oversight hearings and related realities facing Gallaudet and other special institutions today. There was agreement on the urgency of communicating these realities to people on campus as well as to the College's alumni and other constituencies around the country.

Agenda items drawing the most attention during the Sept. 3-6 retreat were the "Strategic Plan: Mission and Goals" (the "Master Plan"), the revised undergraduate admissions policy, the Quality Assessment Committee report and the action taken by California's Department of Rehabilitation to require a minimum reading level of students that it will send to Gallaudet.

Each dean and Central Administration member shared his or her department/division goals for the year and raised the key issues facing each particular unit. Questions, answers and discussion followed most of the presentations.

Attending the retreat in addition to Dr. Lee were Central Administration members Doin Hicks, Jim Barnes, Lou Markwith, Bob Davila, Merv Garretson and Jack Gannon along with Deans Catherine Ingold, David Tweedie, Allen Sussman, Roslyn Rosen, Ann Davidson, Ray Trybus and David Martin. Also participating in part of the retreat were John Day, Dave McGuinness, Bill Marshall and Ed Corbett.

This was the first time that the Central Administration and Council of Deans have met in a retreat format. The facilities at Hunt Valley Inn were suitable for both hard work and needed relaxation. Participants said the retreat was beneficial and suggested that a follow-up meeting be held on campus in mid-year.

Drivers, take heed: Children about

From 2:50 to 3:15 p.m. daily, and from 2:05 to 2:30 p.m. on Wednesdays, students at Kendall Demonstration Elementary School are embarking onto Gallaudet vehicles.

So that students are loaded safely, the road in front of Kendall School,

Switzer Drive, will be closed during those times and drivers must enter and exit the campus by other routes.

Additionally, all drivers are asked to exercise caution when driving on Switzer Drive during the arrival time of the KDES school buses from 8:25 to 8:45 a.m.



Nearly 200 friends of Bill Stevens, right, attended a Sept. 13 reception in honor of the retired Print Shop director. Lou Markwith and Howard Busby observe Stevens in action.

Visiting professor to give lectures

Richard E. Ladner, a visiting professor in the Department of Mathematics, will present a series of lectures on various topics in computer science. All six lectures in the series will be held in LN 11, Merrill Learning Center, from 4:30 to 5:30 p.m. on selected Wednesdays.

The first in the series is "Non-Computable Problems," to be presented Sept. 25. Others in the series are: "Computational Complexity," Oct. 2; "Probabilistic Algorithms," Oct. 16; "Parallel Algorithms," Oct. 30; "Computer Networks," Nov. 20; and "DBNet: A Computer Network for Deaf/Blind People," Dec. 11.

Dr. Ladner, who is on sabbatical leave from the University of Washington in Seattle, said that the final lecture should be of special interest to faculty and staff.

Dr. Ladner is also teaching a new class on the theory of computation and is continuing his research work in the theory of distributed computation and in computer-aided communication for deaf and deaf/blind people.

Dr. Ladner's parents are both graduates of Gallaudet. His father, Emil Ladner, was a member of the Class of 1935. His mother, Mary Blackinton Ladner, graduated in 1936. They visited Gallaudet this summer to celebrate their 50th class reunions. Both parents were teachers at the California School for the Deaf in Berkeley for many years. They are now in retirement in Berkeley.

Booth being built at main entrance

By next month the College will have a new security/information booth inside the main entrance at 8th and Florida.

The new booth is being built in the island of flowers behind the present booth, which will be torn down and replaced with asphalt paving.

With the present booth removed, and with a 7-foot section of the flower island taken out, drivers will be able to stop adjacent to the new booth without blocking traffic. For those seeking directions, there will be a map of the campus on the side of the booth.

The 6 1/2-foot wide booth will have wood siding and an overhanging metal roof. There will be windows with glazing on all six sides of the booth, including the door side.

Making, changing 25 beds only small part of her job

Karen Menke is a college graduate who makes beds for a living.

The beds she makes are beautiful, ever-changing and cover 4,135 square feet of the Kendall Green campus. And she says her job is almost not work, it's fun.

Menke is the horticultural supervisor on campus, the first woman to hold the position here. Her beds are the 25 areas planted to seasonal flowers that delight the eye of the weary campus traveler. She designs the beds each season, selects the plants to fill them and supervises a four-person crew in the installation and maintenance of the beds. Menke and her crew are responsible for all the plant life on campus, including trees, shrubs, turf and, of course, the flowers.

Slight, blonde, with a sunny freckled grin, Menke can be seen every day making her rounds of the campus, checking not only the flower beds but all parts of the campus under her care. On a recent morning she drove around slowly in her Gallaudet pickup, taking square-foot measurements for seeding grass and looking to see if any trees needed replacing. In coming weeks she will be figuring out how many annuals will be needed for planting in the spring and then ordering seeds to be started at a local nursery.

"I try to put different things in every year," she says, explaining that some flowers have maximum impact—those brilliantly-colored ones that can be seen from a distance, like the triangular bed of salvia that adorned the front entrance until recently (it has been dug up in the process of constructing a kiosk there). Others have minimal impact—the smaller, more delicately-hued plants that have to be seen up close to be appreciated, like the impatiens in planters at MSSD.

She has to consider color and height combinations, duration of bloom, light requirements, hardiness, variety of shapes and much more. Menke, quietly proud of her work, keeps meticulous records on each bed, listing the name of the bed, its location, the square footage, what was planted there, how long it took to plant and who did the planting. She can look in her card file and determine immediately how many bulbs are needed or how many annuals will fit in a particular bed.



A bed of earthly delights: Multicolored zinnias greet the sun outside Chapel Hall.

During 1985 Menke and her crew will have planted 7,800 annual flowers, 492 chrysanthemum plants and 9,290 spring bulbs. Annuals are planted in May, chrysanthemums in some areas in September and spring bulbs in October.

Menke, who has worked at Gallaudet for almost three years, received a bachelor of science degree in horticulture from the University of Maryland. She had her own home landscaping business for a time and was also the children's horticulturist at Brookside Gardens in Wheaton, Md., in charge of setting up six new programs for school kids. In addition, she designed interior landscapes with Tropica in Silver Spring.

Raised in the country, Menke says she couldn't tolerate a job sitting in an office. She scans the grounds as she talks, noticing a tree that appears to be having a problem, bending down to pull a weed from a flower bed, exclaiming in dismay at the discovery of some blight in her marigolds.

"This is the best-looking campus I've been on," she says, "and I've been on a couple." Looking around at the carefully-kept floral displays, well-managed trees and neat lawns, one could hardly argue.



Published each Monday for staff and faculty of Gallaudet College by the Office of Alumni Relations and Advancement.

Executive Director

Jack R. Gannon

Director of Publications

Laura-Jean Gilbert

Editor

Jim Stentzel

Writers

Nancy Moore
Mary Johnstone

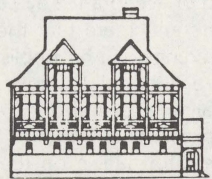
Contributors

Howard Busby
Jack Mika

Photographers

Charlie Shoup
Chun Louie

Gallaudet College is an equal opportunity employer/education institution. Programs and services offered by Gallaudet College receive substantial financial support from the U.S. Department of Education.



LUNCHEON

SPECIALS AT "OLE JIM"

WED. THURS. & FRI.

FROM

11:30 to 1:30

HAPPY HOUR AT "OLE JIM"

STOP IN FOR A DRINK

THURS. & FRI. 4:00 to 7:00 p.m.



The Ely Center multipurpose room was crowded on Sept. 11 with hundreds of students and others getting information on the wide range of activities, programs, organizations and services available on campus. "Activity Spectrum '85" was coordinated by Dinaz Adenwalla of the Office of Student Development, a unit of Student Affairs.

Among Ourselves

Barbara Williams and Betsy Kipila of the Cued Speech Office traveled to Mountain Lakes, N.J., Aug. 26-29, to lead a Cued Speech workshop. The workshop was attended by 22 members of the Lake Drive School, which serves more than 100 hearing impaired children, preschool through high school.

Ed Corbett, executive director of the Enrollment Management Office, conducted a leadership training workshop for hearing impaired students in Columbus, Ohio, Aug. 25-28.

Paul K. Nance, former vice president for business at Gallaudet who retired in December, 1982, dropped by to visit old friends at Kendall Green recently. Paul and his wife now reside in Santa Fe, N. Mex.

Eugene "Gene" Petersen, author, educator and rehabilitation specialist, has begun his year on campus as the 1985-86 recipient of the Powrie Vaux Doctor Chair of Deaf Studies. Petersen will devote the year to writing a book entitled "Deaf America, 1985," a compilation of interviews with deaf people. Petersen, whose office is in Trailer 5, can be reached at x5022 (V/TDD).

Jo Linder-Crow is the new Extension Program coordinator in the Office of Extension and Summer Programs. She worked most recently as coordinator of inservice activities in the Program for Special Education/Hearing Impaired at Lewis and Clark College in Portland, Oreg. Linder-Crow succeeds Anne Deggendorf, who has enrolled in the MBA program at the University of Maryland.

Catherine Sweet is now a research associate in the Research Institute. During the past two years while a graduate student, she worked at the institute as a research assistant. Her job responsibilities include coordination of an NIH research project on predictive factors in the development of reading and writing skills in congenitally deaf persons.

PreCollege Outreach Program activities conducted across the United States

A variety of PreCollege Outreach Program activities have been conducted recently in several states. The following is a summary of some of those activities, each arranged through the Affiliated Schools program under the PreCollege Programs (PCP), and some in conjunction with the Kellogg Special School of the Future project.

Jo Israelson, a planning specialist for PCP Outreach, completed a series of workshops on mainstream programs in Ohio. In Wayne County she facilitated a four-day workshop on developing a program philosophy, designing mainstream criteria, identifying curriculum priorities and planning for community participation in a program. She also presented a communication workshop for committee members.

At the Findlay City Schools, Israelson presented a workshop to the Language Curriculum Committee on members serving as resource persons in the schools. At the Columbus Hearing Im-

Substance abuse topic of month-long project

The Office of Student Development (OSD) is kicking off a new drug education program entitled Project STRIDE (Straight Talk Resources in Drug Education) beginning in October.

Designed to help students know more about substance abuse, the new program will include Project STRIDE Miniversity, a series of drug education workshops. Project STRIDE Month, all of October, will end with a contest, "It's STRIDEademic," in early November. Using an "It's Academic" format, the contest will challenge students on their knowledge of alcohol/drug facts and trivia.

The OSD, together with the Student Health Services, has also established a group of peer educators called STRIDers. These volunteer paraprofessionals will plan and lead drug and health programs for students, teach preventative health practices, facilitate group discussions on drug/health issues and consult with students needing information.

Printed and videotaped information on student development and alcohol/drugs is available to students, staff and faculty at the Student Development Drug Education Resource Center maintained by OSD.

Those wanting a brochure on the Project STRIDE Miniversity or needing more information about Project STRIDE can call John Mihall, director, Office of Student Development, Ely Center 150, x5057.

STRIDE-related workshops slated

Two workshops on the subject of adult children of alcoholics will be held in October as part of Project STRIDE Month (see related story).

Jane Hurst of the Religion Department and Barbara Pollard of the Social Work Department will lead the workshops. The discussions are for anyone whose parents' drinking was a problem, or "for those who live, love and work with adult children of alcoholic families."

"Adult Children of Alcoholics: Awareness" will be held Oct. 9 from noon to 1 p.m. in the Ely Center

multipurpose room. "Adult Children of Alcoholics: Impact, Understanding and Recovery" will be held Oct. 28 from 7 to 9 p.m. in the Ely Center art exhibit room.

Faculty, staff and students are invited to attend the workshops. Included will be information on and strategies for coping with this problem, plus first-hand experiences of those who grew up in alcoholic families.

For more information contact either Dr. Hurst, x5773 (V), or Pollard, x5342 (TDD).

'Gallaudet Encyclopedia of Deaf People and Deafness' nearing completion, scheduled for Fall 1986 publication

When the "Gallaudet Encyclopedia of Deaf People and Deafness" is finally published by McGraw-Hill in the fall of 1986, John Van Cleve may begin to relax a little.

Van Cleve, professor of history and chair of the History Department, is editor-in-chief of the encyclopedia. He has been working on it since 1979. When he kiddingly says he spends 50 hours a week on the publication and 20 hours a week on his teaching duties, one wonders if there isn't a grain of truth in his joshing.

Ten associate editors are also working on the encyclopedia, two of them Gallaudet graduates. Robert Panara, professor of English at the National Institute for the Deaf in Rochester, N.Y., and Lawrence Newman, assistant superintendent for instruction at the California School for the Deaf in Riverside, Calif., both received degrees from Gallaudet. Two other associate editors connected with Gallaudet are John Christianson, chair of the Sociology Department, and Robert L. Williams, professor of psychology. Four of the 10 associate editors are hearing impaired.

Approximately 400 people—many of

them from Gallaudet—have been submitting entries for the encyclopedia, and the writing is nearing completion. Beginning soon will be the final editing, cross referencing and indexing.

The encyclopedia, which will have three to four volumes, is "an attempt to have entries on every topic related to deaf people and deafness about which anything is known," says Van Cleve. Although the work's focus is on the United States, it is international in scope.

Included will be entries on approximately 45 different sign languages, articles about deaf people in 33 countries and many individual biographies.

Also in the encyclopedia will be entries on all the major disciplines, including history, audiology, otolaryngology, sociology, speech, language, psychology, rehabilitation, literature, performing arts and law. The volumes will include many photographs and illustrations.

According to Van Cleve, the idea for the encyclopedia originated with two members of the Gallaudet community, Albert Berke and Eugene Bergman. Berke wrote the initial proposal that won a grant from the National Endow-

ment for the Humanities. That grant, since used up, was followed by grants from Armand Hammer and the Bernard Lee Schwartz Foundation.

The project is now being supported solely by McGraw-Hill, which pays all the writers and associate editors and for all translations. Gallaudet will receive a percentage of the royalties on the encyclopedia.

The project is unique, according to Van Cleve. "There is nothing comparable in the world of deafness," he states. While somewhat similar to the "Encyclopedia of Black America" and "Encyclopedia of American Ethnic Groups," the Gallaudet Encyclopedia is broader, says Van Cleve, because "deafness is both cultural and medical—it does not fit any one category."

Apology

Adcrafters, printers of *On the Green*, apologizes to the staff and readers of the paper for inadvertently dropping an ad for the "Ole Jim" luncheon program from last week's issue, thereby leaving a large blank space on page 4.

Announcements

Updated, fall 1985 information of the 403(b) tax sheltered annuity/investment program is available now from Kayt Lewis in the Personnel Office, x5113 (V/TDD). Under the program, all regular staff and faculty and all extended temporary employees with more than one year of service may deposit funds through payroll deduction and not pay taxes on those funds until they are withdrawn from the account.

The Day Care Center has postponed its Tupperware fundraising party previously scheduled for this Wednesday, Sept. 25.

For "Monday Night Football" fans who don't already know it: The National Captioning Institute is providing ABC with live closed-captioned coverage of the games this year.

Safety and Security reminds us that next Monday, Sept. 30, is the last day

to register vehicles and receive the new 1985-86 parking stickers.

The first meeting of Overeaters Anonymous will be held Tuesday, Sept. 24 from noon to 1:15 p.m. in the conference room at "Ole Jim." No dues, fees, or weigh-ins are required. Organized as a fellowship, Overeaters Anonymous is open to anyone whose eating habits are a problem. For more information, call Truman, x5499 (V) or x5496 (TDD).

The Purchasing Department now has Minicom TDDs available for rental. The price for each machine is \$5 per week or any part of a week. For further information, contact Maxine Harewood, x5160.

The Eastern Regional Conference for Educators of the Hearing Impaired will be held Friday, Oct. 18 at MSSD. Pre-College Programs is serving as host for the conference.

An interpreted performance of the award-winning play "Evita" will be presented Friday, Nov. 1 at Toby's Dinner Theatre, Columbia, Md. Tickets for the performance, which includes a buffet, are \$21.95. The buffet will be served from 6:15 to 7:45 p.m., and the show will start at 8:30 p.m. The special performance has been arranged through Programs in Adult and Community Education (PACE). Reservations may be made by calling x5597 (V/TDD).

Jobs Available

Some of the advertised staff positions may already be filled. For updated information, call the JOB RECORDING in the Personnel Office, x5514 or x5520 TDD.

SECRETARIAL POSITIONS: Contact Personnel for listing.
INDUSTRIAL ARTS TEACHER—ELECTRONICS: MSSD
AUDITING ASSISTANT: Internal Audit
CUSTODIAN/FLOOR MAINTENANCE: Physical Plant
SPEECH PATHOLOGIST: MSSD
CIRCULATION AND INFORMATION LIBRARIAN: Library
COORDINATOR OF RESIDENCE EDUCATION: School of Preparatory Studies
REFERENCE AND PROGRAM DEVELOPMENT LIBRARIAN: Library
MECHANIC IV: Physical Plant
LITHOGRAPHER II: Publications and Production
CAMPUS SERVICES REPRESENTATIVE: Bookstore
PERIODICAL ACQUISITIONS LIBRARY ASSOCIATE: Library
RESEARCH SCIENTIST I: Center for Studies in Education and Human Development
CAMPUS POLICE OFFICER: Safety and Security
RESIDENCE EDUCATION ASSISTANT: MSSD Residence Programs
REGISTERED NURSE: Student Health Service
RESEARCH ENGINEERING SPECIALIST: Sensory Communications Research Laboratory
UNDERGRADUATE ADMISSIONS COUNSELOR/RECRUITER: Enrollment Management
GRADUATE ADMISSIONS COUNSELOR/RECRUITER: Enrollment Management
PROGRAMMERS: Computer Services
ELECTRICIAN: Physical Plant
NURSE PRACTITIONER: Student Health Services
NIGHT STUDENT AIDE: MSSD Residence Programs

Society to hold spoken/silent auction as fundraiser for Gallaudet College

An auction to raise funds for Gallaudet College will be staged by the Society of Consumer Affairs Professionals in Business (SOCAP) on Nov. 14. A simultaneous silent auction will enable deaf people to participate.

The auction will be held from 6 to 9 p.m. at the National Rural Electric Cooperative Association Building, 1800 Massachusetts Ave. NW.

Individuals and organizations are invited to contribute auction items or services with a suggested minimum value of \$50. Donators will receive acknowledgement of their contribution during the auction and in the printed program.

Donation forms have been distributed to the various departments on campus. Additional forms may be picked up at the Development Office in the Learning Center Annex or by contacting Don Pettingill, x5408. Donors are asked to return their forms no later than Sept. 30 to Lynn Pisano, 5112 Connecticut Ave. NW, Washington, DC 20008.

Bison to face '84 conference champs

The Gallaudet football team will face the University of North Carolina Club (UNCC)-Wilmington in the second home game of the season on Sept. 28.

The UNCC-Wilmington team, which beat the Bison last year, was the North Carolina Club Eastern Conference Champion last year with a 7-3 record. Most of the starting team remains intact.

"We are looking forward to the game with UNCC-Wilmington," said coach

Bob Westermann. "We feel that we are an even match physically."

Several Gallaudet players will be returning after recovering from injuries. "This should give our team a lift," said Westermann. "We've been working real hard this week, and we anticipate a great game."

Gallaudet was beaten 49-0 by Knoxville College in the second away game of the season on Sept. 14.

Cross country teams making strides

Cross country coach Jack Mika (Mathematics Department) predicts that the men's and women's teams will make some impressive showings by the end of this season. "We're rebuilding the teams," said Mika. "Individual improvement has been remarkable."

The teams participated in invitationals at Essex Community College on Sept. 7 and at Lebanon Valley College on Sept. 14.

Sophomore Betsy Bachtel led the women's team at Essex with an outstanding second-place finish in a field of 66. The Bisonettes placed fifth in a field of 10 teams.

Bachtel, an experienced track runner, finished second in the 1500-meter and third in the 3000-meter races at the XV World Games for the Deaf in Los

Angeles this summer.

Sandy Adam, an AA Interpreting Program student, finished sixth in a field of 33 at the Lebanon Valley meet. The women were ineligible for team competition, however, because only four Gallaudet runners participated.

Bison Roy Suskind ran his best time to finish 25th in a field of 49 at the Lebanon Classic. Suskind was Gallaudet's top runner last year.

The teams' first home meet was against York College on Sept. 21. Other home meets are against Penn State Capitol on Sept. 28 and Western Maryland/Johns Hopkins on Oct. 19.

Anyone interested in trying out for cross country running is invited to come to the track any day at 4 p.m., said Mika.

Classified Ads

FOR SALE: '76 MG "Midget," new convertible top, new winter hardtop. 87,000 mi. on great engine, fair body, \$1,500. Call Jane, x5888 (TDD) or x5522 (V). Eves. voice only, 370-3931.

TUTOR AVAILABLE: To help develop your sign language skills. Call Joanne, x5160 (TDD) before 3 p.m. weekdays.

FOR SALE: Used walnut veneer dining set w/black legs, 6 chairs and padding, \$200. Call 622-2543 eves. Tues., Thurs., Fri. or weekends.

TO GIVE AWAY: 2 free parakeets plus cage and supplies. Call Mike, x5485 (TDD).

FOR SALE: Model 15 TTY, mint cond. just overhauled, plus coupler, phone type, both for \$150. Call Bill, 894-5481 (TDD) before 10 p.m.

WANTED: Life membership in Holiday Spa. Leave name and number at 984-8343 (V/TDD) days.

RIDE WANTED: Will share expenses for rides to Gallaudet from Riverdale, Md. and back. Call Renee, x5114 (V/TDD).

FOR SALE: Carpet, never used, 5-year warranty. 21 square yds. or 12' x 16', medium brown, soil-free, static-free. Retail \$402, now \$274 inc. pad and installation. Call 474-0537.

WANTED: Carpool from Arlington, Va. area to Gallaudet. Call Judy, x5548 (V/TDD).

FOR SALE: 2 Walt Disney World tickets, \$12 each. Good for 1-day visit to Epcot Center, Magic Kingdom and roundtrip bus transportation from there to Walt Disney World Village. Call 474-0537.

WANTED: Nonsmoking female to share 2-BR furnished townhouse near Holy Cross Hosp. in Silver Spring. \$250/mo. inc. util. Call Tom Janny, TDD only, at 443-1965 (work) or 589-5724 (home).

FOR SALE: New king-size waterbed with frame, thermostat and shelves. \$250 or best offer. Call eves., 371-0940.