

11-2-2007

On the Green Vol. 37 No. 22 November 2, 2007

Gallaudet University

Follow this and additional works at: https://ida.gallaudet.edu/onthegreen_2001-2010

Recommended Citation

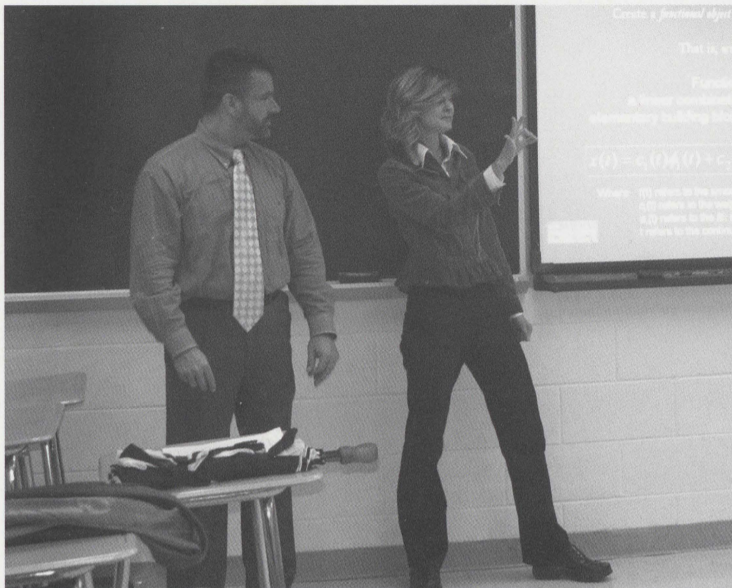
Gallaudet University, "On the Green Vol. 37 No. 22 November 2, 2007" (2007). *2001-2010*. 148.
https://ida.gallaudet.edu/onthegreen_2001-2010/148

This News Article is brought to you for free and open access by the On the Green at IDA@Gallaudet. It has been accepted for inclusion in 2001-2010 by an authorized administrator of IDA@Gallaudet. For more information, please contact james.mccarthy@gallaudet.edu.

On the Green going electronic

The “green” in *On the Green* will take on new meaning this month when the publication goes electronic. After almost three decades of printing on the familiar ledger-sized paper the campus has come to know, the Office of Public Relations will transition to a more environmentally friendly and cost-efficient way of dispensing news for faculty, staff, and teachers.

Beginning with the November 16 issue, *On the Green* will be available in two paperless formats: PDF and HTML, both viewable on your computer or Internet-enabled pager. For anyone wishing to take a hard copy home, the PDF will be ready to print and go. Look for an email with links to these two versions.



Dr. Regina Nuzzo, assistant professor in the Department of Mathematics and Computer Science, presents “Functional Data Analysis and Its Applications.” In this October 19 lecture, she discussed research in a new field of statistics called Functional Data Analysis (FDA), which can analyze data made up of continuous curves instead of single points. Through examples, Nuzzo showed how FDA could answer questions about how weather patterns change over time and find hidden patterns in a psychology experiment that followed people’s reactions to the auditory and visual aspects of a musical performance. The lecture, part of the Mathematics and Computer Science Colloquium, was attended by faculty from the departments of Mathematics and Psychology, as well as Gallaudet alumni and a visiting science writer.

IN THIS ISSUE

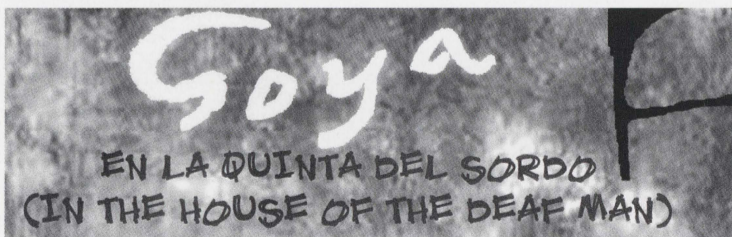


Student Delia Lozano-Martinez expresses her opinion during a forum on identity politics and bilingualism, which was part of Enrichment Day.



Homecoming 2007

Akita and Saint Bernard mix Athunder celebrates Homecoming.



Theatre Arts presents *GOYA en la Quinta del Sordo*.



Clerc Center Happenings

Mary Ellsworth discusses the condition of silver maple leaves with students who participated in the Clerc Center’s award-winning research.

On the Green—A publication for Gallaudet faculty, teachers, and staff
Gallaudet University • 800 Florida Avenue NE, Washington, DC 20002-3695

Gallaudet community examines the roles of ASL and English on Kendall Green



Dr. Leslie Rach (center), of the Department of English, makes a point during the Enrichment Day panel, “From Mission to Practice: Putting Bilingualism into Action.” Dr. Laurene Simms (right), also from Education, and Dr. MJ Bienvenu of the Department of ASL and Deaf Studies, look on.

Inclusive bilingualism was the theme of the day as students, faculty, and staff came together to learn and discuss American Sign Language and English at Gallaudet.

Regardless of where their normal routines take them at 9 a.m. on a Tuesday, students, faculty, and staff were doing something different on October 16. That was when the community gathered for Enrichment Day, ready to explore ways that Gallaudet can become a more inclusive bilingual environment.

Enrichment Day gives the Gallaudet community a chance to come together and focus on one vital topic. Activities on this year’s theme of inclusive bilingualism included keynote addresses by linguistic experts, a student forum on identity politics and language, and a panel discussion on putting bilingual theory into practice. The premier of nine student films made during the 90-hour WhyGallaudet? video contest closed the day.

Provost Stephen Weiner opened with an overview of the University’s five-point strategic plan, which includes making Gallaudet an exemplary institution of higher education where both

American Sign Language (ASL) and English are valued for their cognitive and cultural benefits. In order to do this, campus-wide discussions are crucial. “We need to be open to dialogue. It leads to understanding of what it means to be a bilingual place in the world,” Weiner said during the morning session.

Next, Dr. Richard Clément, director of the Official Languages and Bilingualism Institute at the University of Ottawa, gave his presentation “Bilingualism: Contexts and Consequences.” According to his experience and research, said Clément, bilingualism is much more than simply using two languages. “Bilingualism is imbedded in a social context and in community practice,” he explained.

Clément said that bilingualism, in addition to being a helpful practice at a university, actually improves the well-being of those who practice it. Studies show that people who acquire a second language have more positive views of the group that uses the other language, higher self esteem, and less stress.

continued on page 2

Institutional Research completes Campus Climate Survey

By Thomas N. Kluwin

Both in response to the Middle States Commission on Higher Education’s interest in having specific data on the climate at Gallaudet, as well as to follow-up on the work in 2003 of several faculty and staff groups looking at the climate on campus, the Office of Institutional Research, in cooperation with the workgroups on diversity and on healing, developed a 43-item survey.

The survey was to become a permanent annual survey which would consist of general statements and specific items reflecting a focus for a particular year or the results of an intervention from the previous year. A third component of the permanent survey was to be a small number of open-ended questions determined by circumstances at the time of the annual survey. For example, an issue of concern at the time of the original survey development was the campus-wide understanding of culture, diversity, and cultural identity.

Five areas of concern, reflecting the work of the 2003 climate working groups, were identified: Respect, trust, and fairness; institutional communication and information sharing; management

style; language—specifically access to both ASL and English; and academic culture.

After pilot testing an online version of the survey, the full survey was distributed through the Blackboard system to roughly 1,100 faculty and staff from August 30 to September 7. A total of 210 individuals attempted to access the survey out of 1,100 possible participants. Of these, 191 completed a part or all of the survey, and from this number, 184 completed and submitted responses to more than 10 of the items. These respondents broke down to 84 faculty members, 70 who identified themselves as professional staff, and 30 non-professional staff.

For the five original areas of concern, the most frequent response was that the respondents neither agreed nor disagreed with the statement (about 48 percent). The next most frequent response was a simple agree or disagree with the statement (about 22 percent each). The least frequent responses were the strongly agree or disagree responses, which accounted for the remaining 8 percent of respondents. Essentially, most of the respondents were neutral about conditions on campus with equal numbers satisfied or dissatisfied.

continued on page 2



Student Delia Lozano-Martinez expresses her opinion during a forum on identity politics and bilingualism, which was part of Enrichment Day.

Enrichment Day

continued from page 1

A list of recommendations rounded out Clément's address. Like the University of Ottawa, Clément believes that Gallaudet should have the goal of becoming a standard-setting bilingual institution.

The second keynote speaker was Dr. Benjamin Bahan, a professor in the Department of ASL and Deaf Studies. His address was entitled "Context for American Sign Language/English Bilingualism: Sensory Orientation, Gesture, and Signed Languages."

Dr. Bahan's presentation illustrated what is most unique about ASL/English bilingualism—the differences in the sensory modalities in which the two languages are processed. While classes at the University of Ottawa may be in either French or English, classes at Gallaudet must include both ASL and English. Bahan pointed out that signed languages emerge out of the visual/tactile orientation of deaf individuals. Understanding the implications of this orientation are critical to understanding this unique brand of bilingualism.

Following the keynotes, volunteers from several offices on campus distributed box lunches to the participants and a lunchtime forum began. Provost Weiner invited students to take the platform in the Market Place and give their thoughts on identity and using ASL and English at Gallaudet. During the lively discussion, students and others expressed a variety of views on the topic, and many agreed that they would like to continue that kind of dialogue.

The next activity focused on action from educational and linguistic perspectives. The panel discussion, "Mission to Practice: Putting Bilingualism into Action," was moderated by Dr. Cynthia Bailes, chair of the Department of Education. Panelists were:

- Dr. Laurene Simms, professor in the Department of Education
- Dr. Robert E. Johnson, professor in the Department of Linguistics
- Dr. Leslie Rach, associate professor in the Department of English
- Dr. MJ Bienvenu, professor and chair of the Department of American Sign Language and Deaf Studies

Enrichment Day culminated in the results of the WhyGallaudet? video conference. ASL and Deaf Studies Professor Janis Cole introduced the nine teams' three-minute videos, inviting each set of filmmakers to the stage for brief comments following their film. Several videos included clips of students from varied backgrounds and language styles. The message was that though these students had vastly different life experiences, all of them chose Gallaudet.

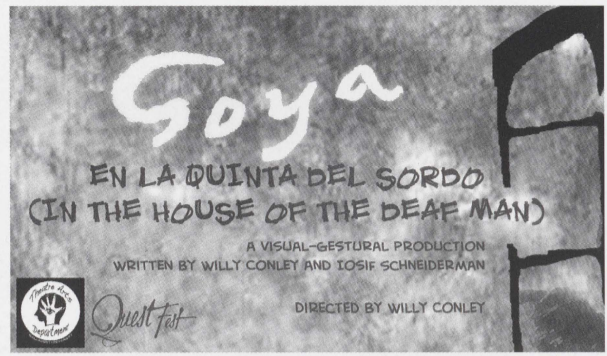
Cole then announced the choices of judges Jon Goodman, an Emmy award winning documentary filmmaker and instructor at New York University film school, Marina Dzugoutov, a Presidential Fellow who teaches visual media production, and Dr. Thomas Baldrige, a professor in the Department of Business who received his MFA in film production from the University of Southern California.

First place went to Megan Matovich and Krystina Adkins, second place went to Michelle Lapides and Jay Kowalczyk, and third went Andrew Jones and Melissa Malzkahn. These top places received \$1,000, \$750, and \$500 respectively, and all of the filmmakers won free movie passes.

Student Body Government Vice President Sara Collins said that she received positive reports from students, especially about the keynote speakers. Students thoroughly enjoyed Bahan's presentation, she said, and were surprised to see bilingualism understood and applied by a hearing Canadian administrator. She hopes to see more. "There is a continued need for dialogue on this subject, as more students are getting a better understanding of the concept of bilingualism in application," she said.

Enrichment Day coordinator Dirksen Bauman, professor of ASL and Deaf Studies, indicated that the evaluations from the day are highly positive, and reflect the feedback that Collins received. "Many people said that they are hungry for more of these lectures and discussions," he said.

Fortunately, the Inclusive Bilingualism initiative from the Office of the Provost will offer just that with panel discussions and lectures throughout the year. "This is an exciting time at Gallaudet, and these events are giving us plenty to chew on." Bauman said. ■



GOYA en la Quinta del Sordo (in the house of the deaf man)

Directed by Willy Conley

The Theatre Arts Department will present GOYA en la Quinta del Sordo (in the house of the deaf man), an experimental movement and nonverbal theater piece that explores aspects of Francisco de Goya's life and art.

Written by Theatre Arts professor Willy Conley and renowned Russian deaf actor, mime, and clown Iosif Schneiderman, and directed by Conley, this visually-oriented drama incorporates gesture, masks, mime, dance, and movement to delve into Goya's satirical humor, his mockery of the social mores and superstitions of his time, his caustic views on the ills and follies of humanity, and the effect of his deafness on his art and relationships with people.

Performances are November 8 to 11 and 15 to 18 in the Gilbert Eastman Studio Theatre, Elstad Annex. Seating is reserved.

This production is recommended for mature audiences.

For ticket information, go to theatrearts.gallaudet.edu/x4855.xml ■



Provost Stephen Weiner presents service awards to Eileen Matthews, Assessment Office executive director and special assistant to the provost (25 years) and Dr. Carol Erting, interim dean of the Graduate School and Professional Programs (30 years).

Campus Climate Survey

continued from page 1

Responses to the open-ended questions reflected the trends seen in the responses to the specific statements, in that a small number of respondents were very positive or very negative since fewer than two-thirds of the respondents gave written answers.

The most negative finding was for a series of statements related to "free expression," or the idea that faculty and staff felt comfortable about expressing views that differed from those of the overall community or the administration. One-sixth of the respondents agreed that there was some form of free expression, one-third neither agreed nor disagreed, one-third disagreed with the notion that there was free expression at Gallaudet, and one-sixth strongly disagreed.

This survey was a preliminary look at institutional climate at Gallaudet, primarily with the goal to make data collection quicker and more responsive. The survey was not successful in reaching a large percentage of the staff, so in the future an effort has to be made to deliver it to a larger percentage of them. However, the survey instrument has been shown to be reliable and informative, and thus could form the basis for permanent and regular data collection. Future development work on the survey instrument needs to

focus on access through languages other than English.

A copy of the report is available through the Institutional Research Blackboard site, which can be accessed through my.gallaudet.edu. ■

(Note: Dr. Kluwin is director of Institutional Research.)

ON THE GREEN

Kendall Green
Gallaudet University
800 Florida Avenue, NE
Washington, DC 20002-3695

Published bi-weekly for the staff, teachers, and faculty of Gallaudet University by the Office of Public Relations.

Acting Director & Publications Manager

Roz Prickett

Editor & Photo Editor

Todd Byrd

Writer

Rhea Yablon Kennedy

Design/Production

Graphic Design & Production

Printing

BelJean Printing

Gallaudet University is an equal opportunity employer/educational institution and does not discriminate on the basis of race, color, sex, national origin, religion, age, hearing status, disability, covered veteran status, marital status, personal appearance, sexual orientation, family responsibilities, matriculation, political affiliation, source of income, place of business or residence, pregnancy, childbirth, or any other unlawful basis.

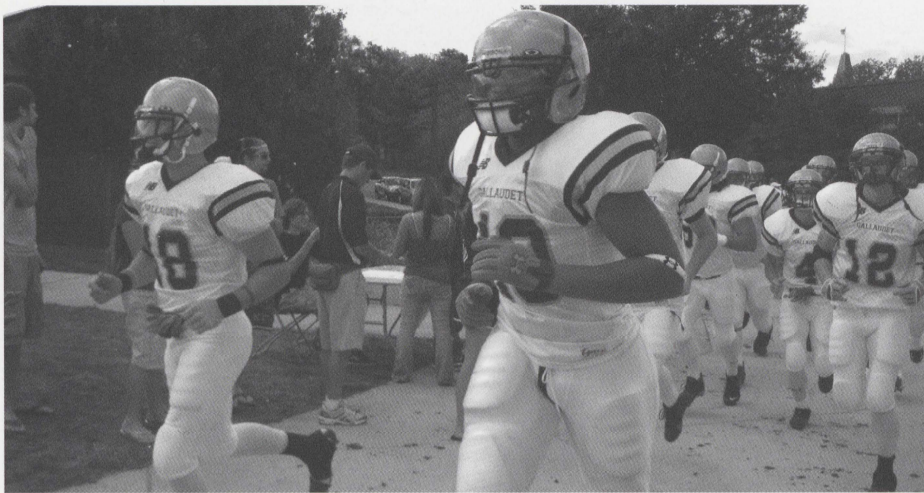
98-342M



Recently honored for reaching employment milestones at the University were Deborah Krichbaum (25 years), an associate professor in the Department of Family and Child Studies, and Dr. John Christiansen (30 years), a professor in the Department of Sociology. Also pictured are (from left): Samuel Weber, instructor, and Julia Bertak, chair, Family and Child Studies, Dr. Sharon Barnartt, chair, and Jilly Kowalsky, instructor, Department of Sociology.

Homecoming 2007

The 2007 Homecoming weekend took place October 19-21. A large, vibrant crowd of alumni and friends came to Gallaudet to meet old friends, see changes to the campus, and watch the games. The photos below offer a few glimpses of the weekend. For sports results, go to GallaudetAthletics.com.



The mighty Bison take the field for the Homecoming football game.



Cheerleaders pump up the crowd.



Iris Gomes smiles for the camera at the Alumni of Color Reunion.



Jane Nowalski (center) cheers along with fellow members of the class of 1982 at their reunion breakfast. The "82'ers" made an impressive showing for their 25th reunion, setting a record of 100 attendees at this Alumni Relations-sponsored event.



Ronald Hirano, a member of the 50th anniversary class and a new alumnus emeritus inductee, shows his pride after receiving his medallion.



Class of 1997 members show their pride at their 10th anniversary reunion.



Amanda Primel relaxes with her dog Athunder, an Akita and Saint Bernard mix.



(From left) Director of Alumni Relations Samuel Sonnenstrahl, Alumni of Color Reunion Co-chair Franklin Torres, keynote speaker Kaori Takeuchi, Alumni of Color Reunion Co-chair Thuan Nguyen, and GUAA President Andrew Lange pose at the Alumni of Color Reunion. The event was sponsored by the Office of Alumni Relations, the Office of the President, and the Center for Academic Programs and Student Services.



Esperanza Latimer is offered a hug from Dr. Davila after becoming an alumna emerita.



At the Peikoff Alumni House Grand Re-opening (from left), GUAA President Andrew Lange, Alumni Relations Director Samuel Sonnenstrahl, Student Body Government President Robert McConnell, and President Davila perform the ceremonial ribbon cutting.

Clerc Center Happenings

MSSD students to present environmental research at GLOBE Learning Expedition in South Africa



Photo by Susan Flannigan

MSSD students Kelsey Wessman (left) and Lateefah Patterson (right) and teacher/researcher Mary Ellsworth discuss the condition of the leaves of a silver maple tree they studied as part of their award-winning research. The students will present their findings at the GLOBE Learning Expedition in South Africa this June.

By Susan M. Flannigan

Two MSSD students are following in the footsteps of Nobel Prize winner Al Gore in helping bring about recognition of global climate change.

Lateefah Patterson and Kelsey Wessman have been selected by NASA's GLOBE (Global Learning and Observations to Benefit the Environment) program as one of five winning U.S. teams to present their research during the 2008 GLOBE Learning Expedition (GLE) in Cape Town, South Africa, June 22 to 27.

The teams will have the opportunity to mingle and share information with more than 300 students and 200 scientists and educators from GLOBE's 109 partner countries.

The theme for the upcoming GLE is "GLOBE Research for Sustainable Communities." GLOBE students will present their research on topics such as environmental impacts on the quality of life and regional impacts of climate change. Along with student presentations and discussions, students will have an

opportunity to work side-by-side with international scientists conducting field studies, see student art displays, and attend cultural events.

Introduced in April 1994 by U.S. Vice President Gore, GLOBE is a worldwide network of K-12 students working under the guidance of teachers trained to conduct research-based, hands-on study and research of the Earth's environment.

Students at MSSD have been on the cutting edge of GLOBE environmental research. "We were one of the original student groups to conduct research using the GLOBE protocols," said teacher/researcher Mary Ellsworth, who will accompany the students to Cape Town. "Our student research started in the classroom in 1995, and in that same year we began offering GLOBE teacher training courses during the summer." The MSSD students will be joined by their collaborative research partners from the Indiana School for the Deaf.

Together, they will present their winning entry, "A Comparison of Green Up in Two Locations at Similar Latitudes: Indiana and Washington, D.C." ■

Among Ourselves

Dr. Thomas Jones, a professor in the Department of Education, was one of four fellows elected by The American Society of Genealogists at its annual meeting in Salt Lake City, Utah, on October 13. The organization elects no more than 50 fellows for life based on the quality and quantity of their published genealogical work. Jones is one of only two double winners of the *National Genealogical Society Quarterly* Award of Excellence for best article of the year. Subsequently, in 2003, he became co-editor of the publication.

Dr. Donna Mertens, a professor in the Department of Educational Foundations and Research, will be a panelist at the third research symposium of VSA Arts (formerly Very Special Arts), which will be held on November 7 at the France-Merrick Performing Arts Center in Baltimore, Md. VSA Arts is an international non-profit organization celebrating the positive influence the arts have had in the lives of individuals with disabilities. The theme of the symposium is "The Contours of Inclusion: Arts Learning Outcomes and Evaluation Strategies." Mertens will serve on the panel with expert and education consultant Stephen Yaffe. VSA Arts invited Mertens to share her expertise at the symposium after becoming familiar with her through her work with the American Evaluation Association and two of her books on evaluation in education.

Personnel Notes

Service Awards for September

Five years:

Bernarda Blanco, custodian, Custodial Services; **Leslie Brewer**, dispatcher/customer service representative, Public Safety; **Andriana Canning**, inventory/office assistant, E-Learning; **Jason Duerstock**, senior security administrator; **Tracey Kempton**, program coordinator, Dean, College of Professional Studies and Outreach; **Jon Mitchiner**, director, Information Technology Services; **Doris Parent**, associate director, corporate and foundation relations, Development; **Tissa Peiris**, ASL and culture trainer, English Language Institute; and **Manuel Vazquez**, staff residential assistant, Residence Life

Ten years:

Anna Hall, athletics operations assistant, Intramurals Program

Fifteen years:

James Tabron, painter's helper, Maintenance Services

Twenty years:

Todd Byrd, senior writer/editor/photographer, Public Relations; and **Peter Fitzgibbons**, research scientist II, Hearing, Speech, and Language Sciences

Twenty-five years:

Linda Delk, director, knowledge integration and evaluation, Office of the Director, National Outreach, Research, and Evaluation Network, Clerc Center; and **Frank Turk**, recreation specialist, MSSD Residence Education

Thirty years:

Roger Beach, professor/chair, Counseling; **James Hynes**, student enhancement educator, MSSD Residence Education; **Gertrude Lewis**, employment specialist, Human Resources Services; and **Russell Perkins**, dissemination specialist, Gallaudet Research Institute

Employees hired in September

John Barber, head men's basketball coach/program coordinator, Athletics; **Samuel Franklin**, admissions counselor, Admissions; **Mihaela Gavril**, assistant professor, Chemistry; **Georgia Weaver**, educational planner, MSSD; and **Shaitaisha Winston**, instructional design specialist, Clerc Center.

September promotions, reclassifications, and transfers

Mark Amissah, Leadership Fellow for Diversity Initiatives, President's Office; **Wendy Armstrong**, assistant supervisor, community policing, Public Safety; **Justen Burns**, coordinator, student development (Interim), Clerc Center; **Jessica Duhon**, educational planner, MSSD; **Ralph Fernandez**, webmaster II, Office of the Director, Information Systems and Computer Support, Clerc Center; **Richard Goodrow**, academic web programmer, E-Learning; **Anna Hall**, athletics operations assistant, Intramurals Program; **Stephen Kalmus**, chief engineer, Utilities Services; **Joseph Kolcun**, intramurals coordinator/game management assistant, Intramurals Program; **Melissa Lawton**, coordinator, student programs, MSSD Residence Education, Clerc Center; **Asiah Mason**, director, regional, national, and international outreach, College of Professional Studies and Outreach; **Dustina Pacheco**, head teacher, Child Development Center; **Luis Torres**, program specialist, Campus Activities; and **Catherine Valcourt-Pearce**, coordinator, publications and development, Publications and Information Dissemination, Clerc Center.

September retirements

Debra Brenner, math teacher/researcher, MSSD; **Bernard Brown**, assistant professor, Business; **Amy Quaynor**, teacher aide, KDES Principal's Office; and **Vivian Stevens**, scheduling Specialist, President's Office.

Ask Cousin Sally

Dear Cousin Sally,

Many people like to walk their dogs on campus. That's fine with me. But many of those dogs leave behind... well, things that shouldn't be left behind on our lawns and sports fields. It's really gross. How can we get them to stop?

Knee Deep

Dear Knee Deep,

First of all, I think you need to come out and say it—the problem is doo. Where I come from, down on the farm, we love the stuff. There's no better fertilizer money can buy! But grazing fields and soccer fields are very different, and the doo has no place in the latter. So what can you do? I say there are two things: one, as my mother always told me, is model good behavior. Pick up after your own pooch. And two, tell those dog walkers what's what. Explain that this is the New Gallaudet, so they'd better pitch in and take care of their own doo.

Campus Calendar

For more details and events, go to calendar.gallaudet.edu
For the Academic Calendar, go to www.gallaudet.edu/x4511.xml
For Athletics events, go to www.gallaudetathletics.com

November

- 2—Undergraduate Open House, all day
- 2-3—Students of Color Leadership Conference, 3 p.m., JSAC MPR
- 5—PFLAG Monthly Meeting, 7:30-9 p.m., HMB S135
- 7—GRI First Wednesday Research Seminar: "Expected and Unexpected Results: Establishment of a New Community Participatory Research Center," noon-1 p.m., JSAC 1011
- 9—Graduate School Thesis/Dissertation Workshop; 10 a.m.-noon, JSAC 1011; American Red Cross blood drive, 10 a.m.-4 p.m., Kendall gym; Presentation: "What Have We Learned from Contemporary Research on Lip Reading?" 2:30-4 p.m., JSAC 1011
- 16—Immigrant Rights and How That Movement is Having A Daily Impact on Everything We Do, noon-1 p.m., Foster Auditorium
- 21-25—Thanksgiving holiday