

3-28-1994

On the Green Vol. 24 No. 21 March 28, 1994

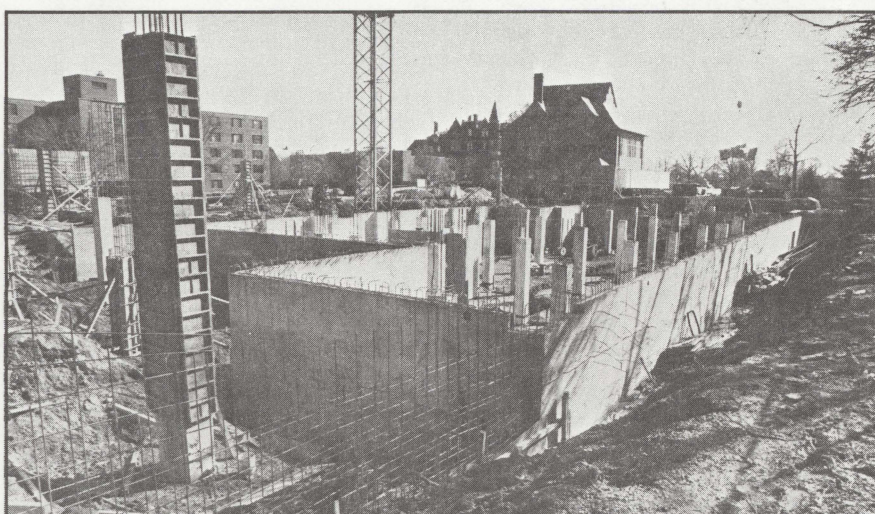
Gallaudet University

Follow this and additional works at: https://ida.gallaudet.edu/onthegreen_1991-2000

Recommended Citation

Gallaudet University, "On the Green Vol. 24 No. 21 March 28, 1994" (1994). 1991-2000. 145.
https://ida.gallaudet.edu/onthegreen_1991-2000/145

This News Article is brought to you for free and open access by the On the Green at IDA@Gallaudet. It has been accepted for inclusion in 1991-2000 by an authorized administrator of IDA@Gallaudet. For more information, please contact james.mccarthy@gallaudet.edu.



Foundation work at the conference center site shows that the project is moving ahead.

Conference Center shaping up

Anyone who has ventured over to the west end of Kendall Green recently probably couldn't help noticing that the 30-foot pit which is the site of the Gallaudet University Conference Center is rapidly filling up.

With the flurry of activity going on at the site—the erection of a 165-foot electric tower crane, and the steady comings and goings of cement trucks—it's hard to imagine that it has been only six months since ground was broken for the 140,000-square-foot conference center.

Although work is proceeding briskly, the project has not been without its delays, according to officials from Gallaudet's Department of Construction Services. Department Manager Daniel Kirby and Project Supervisor John Dunn said that construction got off to a slow start because the city did not issue a building permit to the University until Dec. 28, although preliminary site work was completed in the fall. Then there was the worst

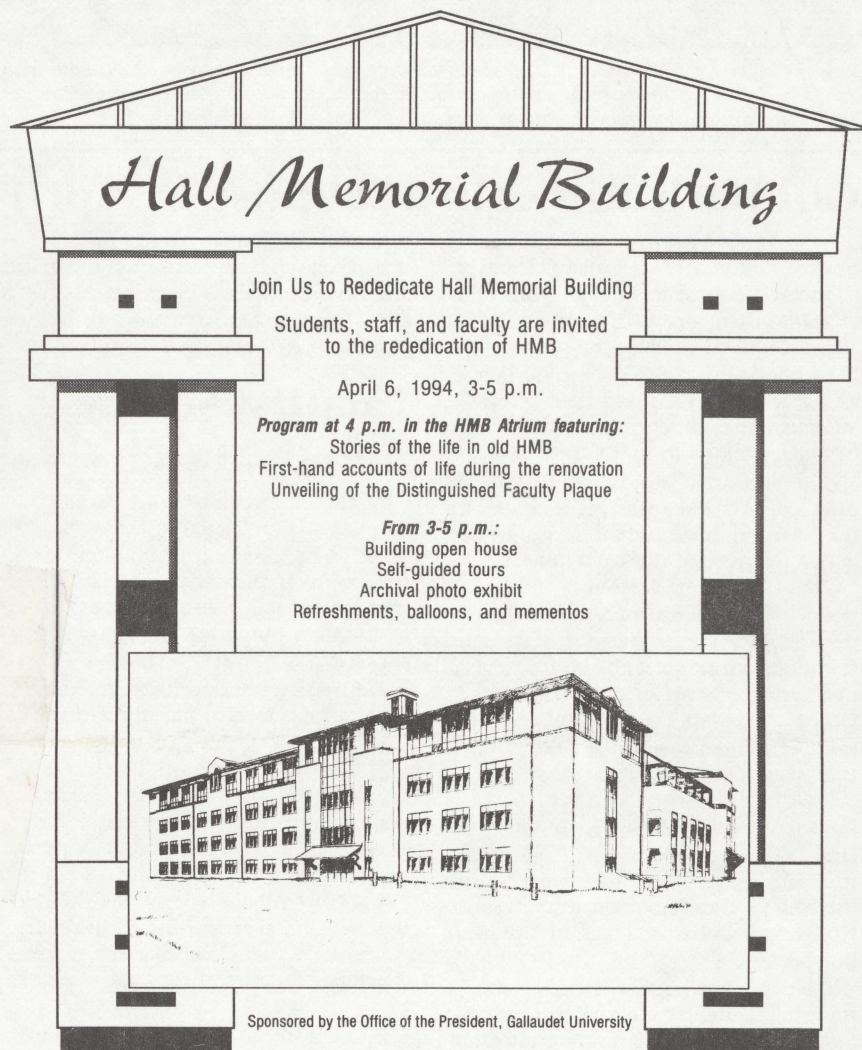
winter in years, which caused work crews to miss 20 days in three months.

Technically, the project is behind schedule, but workers are putting in extra hours, plus working on Saturdays to catch up. "We're not far enough behind to say 'we're behind,'" said Dunn. "In reality, we're pretty close to being on schedule."

The tower crane, which was erected in mid-February, has been a godsend to the project, said Kirby. The crane is used for a variety of major tasks, from setting steel to pouring concrete.

The project is now in what Dunn and Kirby call the "rough construction" stage—that is, construction crews have concentrated on foundation work, erecting support columns, pouring the concrete slab for the basement, and putting up walls in the central area of the basement. Currently, the basement walls are being waterproofed, and the area of the

continued on page 2



Goldfarb appointed director of ICD

Mark Goldfarb, executive assistant to Gallaudet President I. King Jordan, has been appointed director of the International Center on Deafness (ICD), a post he expects to begin in April.

"The International Center on Deafness represents a beacon for many people around the world, and we need to find ways to continue to be that beacon," said Goldfarb about the position. "It's a big challenge, but I think it's an exciting challenge."

One path he sees to meeting this challenge is through technology. "It is important that we look at how ICD can capitalize on new technology to broaden what it does," said Goldfarb. For example, through a teleconference it would be possible to link up several countries for a workshop on deaf education, as opposed to paying a substantial sum to send a handful of individuals to Gallaudet for training or to bring University representatives to a country.

Goldfarb said he also plans to make full use of the new Gallaudet University Conference Center. And he hopes to find ways, possibly through grants, to get Third World countries

the resources they need to participate in ICD programs through technology.

"Of course, my predecessor [the late Eli Savanick] did a wonderful job, so I'm going into a well-established program," he said.

Goldfarb expects to complete his Ph.D. in special education administration at Gallaudet in May 1995. He holds a master's degree in the education

continued on page 2

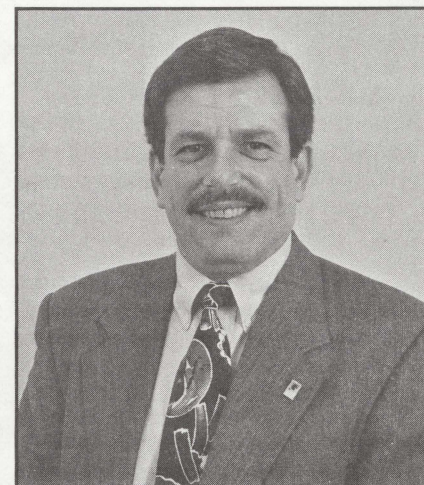
Where Are They Now?

Hall Memorial Building Departmental Relocations* Spring 1994

Graduate Studies and Research:

| | |
|---|--|
| Center for Assessment and Demographic StudiesE111 | Office of Sponsored ProgramsE151 |
| Culture and Communication Studies ProgramS492 | Technology Assessment ProgramS492 |
| Dean's Office, Graduate Studies and ResearchS492 | Scientific Communication ProgramS421 |
| Genetic Services CenterN112 | |
| Graduate StudiesS492 | |
| Mental Health Research ProgramsS492 | |
| Perception and Cognition LaboratoryE151 | |
| Powrie V. Doctor ChairS492 | |

*Note: The remaining campus units scheduled to move to HMB are the Office of Students with Disabilities, the Office of the Vice President for Academic Affairs, and the Office of the Vice President for Academic Support and Student Development. These moves are scheduled for this summer.



Mark Goldfarb



Seven of eight 1994 recipients of \$1,500 scholarships from Rotary District #7620 pose with President Jordan, flanked by Morris Gevinson (left), District #7620 governor, and Henry Tate, Rotarian and longtime Gallaudet advocate, at a March 10 luncheon.

Goldfarb to begin ICD post in April

continued from page 1

of deaf children from Gallaudet and a bachelor's degree in English from Old Dominion University in Norfolk, Va.

Goldfarb's career has centered mainly at Pre-College Programs, where he began as a teacher in 1973 and held several administrative, supervisory, and research-related positions from 1980 to 1990. He also took a leave of absence to serve as principal of the Margaret Sterk School for the Hearing Impaired in Newark, Del.

But this record does not reflect Goldfarb's lifelong interest in foreign policy. It also doesn't reflect his experience designing educational programs for adults, working with the U.S. legislative system as part of the President's Office, or his efforts with the core team of the Television for All (TVFA) campaign to caption local news.

Goldfarb's work record also omits his attempts to find employment in Holland as a teacher of deaf children in 1973. "I found out they were against the idea of a deaf person teaching in Holland. Not because I was an American, but because I was deaf," said Goldfarb.

Goldfarb had similar experiences throughout his travels in Europe that summer. "I kept running into this attitude that 'We only teach deaf people; we don't hire them,'" he said. "That was where I experienced firsthand

the great disparity between how we were feeling about ourselves in America and how Europeans viewed us. Now, 20 years later, I'm getting the opportunity to address that situation globally."

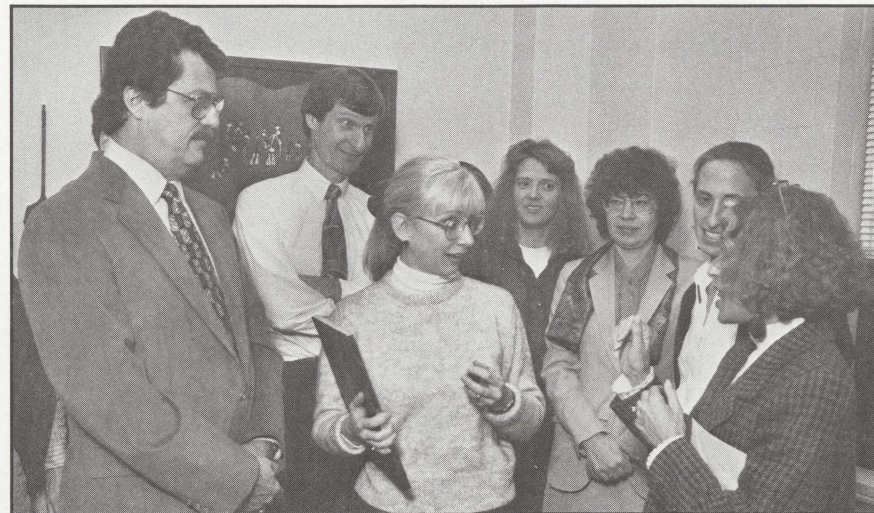
Faculty Senate meets March 21

At the University Faculty Senate meeting March 21, Dr. John Van Cleve, chair of the Steering Committee for the Vision Implementation Plan (VIP), clarified several points about the plan, including a numerical breakdown that showed the faculty's involvement.

He also responded to recent concern among faculty that the University may spend too much on Administration and Business as opposed to academics. Van Cleve said that Gallaudet's expenditures for Administration and Business are low compared to other comparable universities and added that "Academic Affairs is very well funded in comparison with other universities."

Van Cleve also said that the quick deadlines for the VIP are necessary because the Middle States Association (MSA) will return in January 1996 expecting to see changes in regard to its recommendations to the University in its 1991 accreditation report. (*On the Green's* March 21 issue contains a more complete story on the VIP process and the MSA review.)

Edward Krest, interim chair for Committee A (Faculty Welfare), reported that all but one member had been selected for the faculty-requested Ad Hoc Committee to draft a consensus proposal for the amendments to the *Faculty Guidelines* passed by the faculty Feb. 14.



"What! I've been here 15 years?" exclaims an incredulous Mary Gawlik, coordinator in the Center for Career Programs, to her co-workers after receiving her service award.

Announcements

"And Then There Was... LOVE," the 1994 Spring Dance Concert by the Gallaudet Dance Company, will be presented in Elstad Auditorium on April 8 at 11 a.m. and 8 p.m. and April 9 at 8 p.m. Tickets are \$7 for adults and \$5 for students other than Gallaudet students, who will be admitted free with I.D. The auditorium box office will be open April 4-8 from 3-6 p.m. For more information, call x5591.

The National Information Center on Deafness (NICD) has published new editions of *The Directory of National Organizations of and for Deaf and Hard of Hearing People* (free), *Summer Camps for Deaf and Hard of Hearing Children* (\$3), *Statewide Services for People Who are Deaf and Hard of Hearing* (\$1), and *What are TTYs? TTDs? TDDs?* (\$1). Orders must be prepaid, and all requests include a free copy of NICD's publications catalog. Call x5051 (V) or x5052 (TTY) for more information.

Faculty and staff who are eligible to retire within the next five years are invited to a pre-retirement seminar on April 7 and 8, 9 a.m.-3 p.m., in the Dining Hall's Red Room. Speakers from the Social Security Administration, Blue Cross/Blue Shield, the Teachers Insurance and Annuity Association/College Retirement Equities Fund, the National Association of Retired Federal Employees, and Government Retirement and Benefits, Inc., will discuss the effects your benefits will have on your retirement. Lunch will be served. The seminar is sponsored by the Personnel Office. For more information, call x5111 or E-mail HR_AMUSE.

"The Afrocentric Tour of Washington, D.C.," a faculty development funded activity, will take place April 16, 8 a.m.-4 p.m. The tour will be led by Dr. Edward Smith, an American University professor, Civil War scholar, and resident associate of the Smithsonian Institute, in collaboration with Dr. Janice Mitchell, a professor in Gallaudet's Department of Foreign Languages and Literatures. The purpose of the chartered bus tour is to increase awareness of the city's past and present resources and to help reduce misunderstanding between various cultural groups on campus. Luncheon at an African-American restaurant is included. The 30 seats are available on a first-come basis. Faculty members must make reservations by April 2. For more information, call Mitchell at x5568 or E-mail JDMMITCHELL.

The Montgomery County (Md.) Association of the Deaf invites local bowlers to join its bowling league for the 1994-95 season. The league meets Tuesdays at 6 p.m. at the new Bowl America on Clopper Road (Rt. 117) in Gaithersburg. For more information, contact Elaine Herzig, (301) 948-5175 (TTY) by March 31.

Center makes gains

continued from page 1

main floor where the lobby and rotunda entrance will be being framed in. Electrical and plumbing work is also underway.

"By the end of April, the first floor will be pretty well defined," said Dunn. "You should be able to see the overall size and dimensions of the conference center clearly by then."

Classified Ads

Classified ads are printed for Gallaudet faculty and staff. Ads must be submitted in writing in person or by mail to *On the Green*, MSSD, Room G-37. Off-campus phone numbers must include an area code and whether the number is voice or TTY. In compliance with the Education of the Deaf Act of 1992, as amended, payment of \$1 per ad per printing must accompany each ad. The deadline for submitting ads is Friday, 10 days before the desired publication. Ads received March 28-April 1 will be printed April 11.

WANTED: Nonsmoking housemate to share 2-BR house in Cheverly, Md., CAC, W/D, quiet, community, large yard and porch,

walk to Metro, conv. to 295/495/95/50, no pets, prof. female preferred. Call (301) 773-7753 (V).

FOR RENT: 1-BR apt. on Montello Ave. NE, walk to Kendall Green, \$395/mo. plus util.; 1 or 2-BR apts. near PG Community College and U.S. Air Arena, priv. patio entrance, cable ready, yard, \$600/mo. incl. util. Call (301) 499-7219 (V).

WANTED: Early childhood educ. major would like to babysit, prefer children age 8 or under, for deaf family during summer in exchange for room and board, experienced, has car. Call (202) 675-8736 or E-mail 12CPIERCE.

FOR RENT: Large basement room w/private entrance in Laurel, Md., townhouse, access to entire house, to nonsmoker, no pets, \$325/mo. plus 1/2 util. Call (301) 604-4190 (TTY).

FOR SALE: 3-level, Colonial-style townhouse near BW Pkwy. and NASA, 3 BR, 2 1/2 BA, finished walkout basement, deck, fenced yard, fireplace, \$135,900. Call (301) 345-5150 (TTY) 9:30 a.m.-1 p.m. or 6-8:30 p.m.

FOR RENT: Victorian townhouse near campus, 3-story, 2-BR, 2-BA, study, garden, \$850/mo. plus util. Call (202) 398-5810 (V).

FOR RENT: Garden apt. in Columbia, Md., 2-BR, 2-BA, dining rm., storage rm., new kitchen, W/D, DW, walk to lake and mall, \$735/mo. incl. gas heat/water/cooking and condo fee. Call (410) 740-2596 (V/TTY) or E-mail JRSPEEGLE.

FOR SALE: Vacation home, Woods Resort, W. Va., 2-hr. drive from D.C., 2-BR, loft, great rm., fireplace, screened porch and deck, pool and tennis privileges, security, year around use. E-mail JRSPEEGLE.



Published each Monday for the staff and faculty of Gallaudet University by the Department of Publications and Production.

Editor
Todd Byrd

Editorial Staff
Lynne McConnell
Andrea Shettle

Photography Staff
Chun Louie
Joan Schlub

Typesetting
Thomas Corcoran



Gallaudet University is an equal opportunity employer/educational institution and does not discriminate on the basis of race, color, sex, national origin, religion, age, hearing status, disability, covered veteran status, marital status, personal appearance, sexual orientation, family responsibilities, matriculation, political affiliation, source of income, place of business or residence, pregnancy, childbirth, or any other unlawful basis.